



DUFFIELD SCENE

OCTOBER 2022

Edition 360
Published Monthly

Ellis-Fermor & Negus

SOLICITORS

Helping People,
Solving Problems



BELPER • RIPLEY • BEESTON • LONG EATON

Belper 01773 821665

Lexcel

www.ellis-fermor.co.uk

WORLD SQUASH DAY RETURNS TO DUFFIELD

Here in the heart of our village, Duffield Squash & Racketball Club will join forces with other clubs on every continent to showcase the fun, friendships and fitness that squash delivers. We shall be opening our doors to the local community and demonstrating what a brilliant, inclusive, fun sport, squash is. Events will be taking place throughout the day, starting with a junior competition in the morning, a round robin event in the afternoon with further entertainment planned for the evening. Courts and equipment will be available for anyone to



come along and give it a try. Outside and weather permitting, a pickleball demonstration will be given on one of the tennis courts during the afternoon.

Pickleball is a sport where two players or four players hit a perforated hollow polymer ball over a net using solid faced paddles.

Events are due to start at 10:00am and refreshments will be available throughout the day. Duffield Squash & Racketball Club is a community organisation open to adults and children. If racket sports are not to your taste, why not try the recently refurbished gym? The club is owned and run by its members and so the fees are very reasonable compared to commercially run venues. More information can be found at www.duffieldsquashclub.co.uk or follow us on social media. Alternatively, email clubsecretary@duffieldsquashclub.co.uk.



THE
PATTENMAKERS
ARMS
— DUFFIELD —

Coming soon
a traditional pub fully restored back to
its former glory circa 1828

Featuring a brand new brasserie
restaurant with state of the art kitchen,
indoor garden restaurant as well as an
outdoor terrace.

Positions Available

General Manager, Sous Chef, Chef De Parties, Commis Chefs,
Bar Manager, Kitchen Porters, Restaurant Supervisors,
Wine Waiter, Bartenders, Front of House Host,
Servers, Food Runners, Cleaners.

Apply in writing to

jobs@pattenmakersarms.co.uk

Tel: 01332 913077

www.pattenmakersarms.co.uk

CARWISE



Award-winning service from
your local garage

- We hand-pick used cars for choice, quality and value
- We look after all of your motoring needs:
 - Service, repair, MOT, electronic diagnostics;
 - Tyres, air conditioning;
 - Accident repair.
- Please read our customer feedback



Call us on 01332 840779 or visit:

www.carwisederby.com

CARS BOUGHT FOR CASH



DUFFIELD SCENE

Established August 1992

All information, letters, news, articles, diary events, photographs and suggestions should be

marked "Duffield Scene" and sent to: Duffield News, Town Street, Duffield.

Telephone: 01332 898 898

Email: info@duffieldscene.co.uk

Web: www.duffieldscene.co.uk

The Duffield Clinic

Eyes + Ears + Feet

6 Wirksworth Road
Duffield, Derbyshire DE56 4GH

team@duffieldclinic.co.uk
www.duffieldclinic.co.uk

01332 843666

Our services:

- + Eye tests
- + Contact lenses
- + On-site glazing
- + Corporate eyecare/VDU/safety glasses
- + Skin rejuvenation
- + Botox & fillers
- + Podiatry
- + Ear wax suction
- + Audiology/Hearing aids
- + **FREE** Hearing tests

**HOME VISITS
EVENING APPOINTMENTS**



PC-BMI

COMPUTER & MEDIA SERVICES

- PC Repairs & Upgrades
- Apple Mac Repairs & Upgrades
- Business Services & Networking
- New PC's & Laptops
- Virus Protection & Removal
- Software & Tuition
- Backups & Data Recovery
- PC Health Checks
- VHS & Slide to DVD Transfer Service



We visit your home or business

www.pc-bmi.co.uk

Tel: 01332 830888 Mobile: 07894 309024

Finding the right solution for you

PRIDE

electrical services ltd

FREE ESTIMATES

All aspects of electrical work undertaken including:

- Rewires/partial rewires • extra sockets
- extra lights • new extensions • central heating
- wiring/fault finding • inspection and testing
- landlords certificates • friendly reliable service.



Jeremy Bexon

Tel: 01332 660779 Mob: 07921 634473

Email - admin@prideelectricalservices.co.uk

IRONING

- * Free Collection/Delivery to All Areas
- * Fully Insured
- * 24 Hour Return
- * **Just £3.80 per KG ***

Save Time and Stress Call



Pressed Express !!

Tel : 07535 671244

Slimming World

taste the freedom

Slim down for Summer
At one of my friendly
And successful SW groups!

The Allestree Club, Cornhill, DE222FS
TUESDAYS 9.30AM/11AM
SATURDAYS 8AM/9.30AM



No booking. Free parking. Disabled access.
Kate: 07967 372854

slimmingworld.co.uk



Coxbench Hall

Quality Residential Home

Drop in to see us, browse our website or telephone for a brochure and DVD.

Alfreton Road, Coxbench, Derby DE21 5BB

- ◆ Superb home cooking, catering for special diets ◆ Extensive entertainment and activities on offer
- ◆ Outings in our own minibus ◆ Beautiful gardens in the National Gardens Scheme
- ◆ Highly trained staff ◆ All rooms have call system, TV and telephone ◆ Most rooms are en-suite
- ◆ Weekly and long stay options available ◆ Free day's stay for potential Residents

Telephone: 01332 880200 Email: office@coxbench-hall.co.uk
Web: www.coxbench-hall.co.uk

Coxbench is about caring

derbyprinting

**Flyers • Posters
Business Cards • Booklets
Stickers • Banners**

01332 840 880

www.derbyprinting.co.uk

YOUR GREEN COUNCILLORS IN DUFFIELD

Many people relied on the through train between Matlock and Nottingham, which was stopped. Gez lobbied hard with East Midlands Railways and the direct service will be reintroduced from December 11th, although so far only at peak times on weekdays, with a limited services at weekends. The Transpeak bus service which connects the village with Derby and Matlock has also been supported by the County Council to continue until at least December. And you can now catch it on the A6 near Broadway too, thanks to Gez' work. We Greens want everyone to have good ways to get around without using cars. Public transport is a key public service, as it is in many other countries. Here, though, they need to return a profit, so the message really is 'Use it or Lose it'.

Green campaigner Eva Long (pictured with Gez) says 'My train commute to work at



Rolls Royce at Pride Park is a positive part of my day. The walk to the station gives me exercise and time to shift gear between my family life in Duffield and work. Using the train makes me leave work on time too, which helps my work-life balance.'

Dave adds 'A group of my friends and family recently caught the train to Matlock, walked over the hills to The Barley Mow in Bonsall and

returned from Cromford. It was a great mini-adventure and nice not to have to return to a car.' Let's enjoy using our buses and trains – before it's too late!

Meanwhile, Alison and Dave have been working to try to improve Amber Valley's Local Plan. We're pleased that there are no current plans to build on the Green Belt. But this Local Plan will allow sprawling suburbs on lots

of other green field sites. It provides for a massive 1500 (nearly 25%) more homes than the Government says Amber Valley needs. We should not be planning to allow that all over our precious countryside. The government has told cities like Derby to take more houses. The city has the amenities and services for more people. The Conservative council should not allow any of Derby City's housing allocation to be built on Amber Valley's land. You can read our response to the council on our Amber Valley Green Party website.

And Dave has influenced Amber Valley's plans for sports playing fields. It barely mentioned women or girls, so Dave raised this with the council. I'd like to thank the officer and councillor responsible for approving the amended plan, which now includes improving the experiences for women and girls, as well as men and boys.

Nursing care | Dementia care | Long-term care | Residential care | Respite care

Milford House

Welcome to our Milford Care family

Admire the surroundings of our beautiful grade II listed Georgian manor house, enjoy homemade meals from our onsite chef, engage in activities galore, socialise at our parties, singing and more.

Inspected and rated **Good**

Care Quality Commission

You can also be assured of our award-winning 24 hour personalised care service, our 10 step COVID-19 policy and qualified and dedicated staff on hand. We're here to help and can't wait to meet you!

www.milfordcare.co.uk/milford-house | 01332 841 753
Derby Road, Milford, DE56 0QW | milford@milfordcare.co.uk

Milford Care

euronics
Let's Make Life Easy

**Great Products.
Great Prices**

Enjoy our range of top brand appliances at low prices

Expert Knowledge | Super Service
Competitive Prices | Professional Installation

Blomberg seit 1883

SONY

SIEMENS

ROBERTS

BOSCH
Invented for life

Hotpoint

Lec
Pure Refrigeration

Panasonic

For your next LED TV, Washing Machine, Refrigeration and Built-in and freestanding appliances

LESTER & NIX

We deliver and install locally
We advise and care
We can remove your old appliance

www.lesterandnix.co.uk
01773 822828

DERBYSHIRE PROPERTIES
SALES | LETTINGS | HOLIDAY LETS

Local Estate Agents
providing a personal service



Contact Matt Ellis for an up to date valuation

Office: 01332 316715 Mobile: 07581 369070



Pride Place,
Caesar Street,
Derby DE1 3RU



24 Hour Call Out

Pride Plumbing Services

www.prideplumbingservices.co.uk

- Central Heating ▪ Boiler Installations
- Boiler Breakdowns & Repairs
- Bathroom Suites ▪ Taps & Valves
- Servicing & Landlords Certificates
- Unvented Hot Water Units



All work undertaken and guaranteed
Free Quotations

Reg No. 213086

Tel: 01332 367070

Anthony: 07832218516

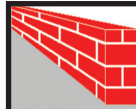


WILLIAMSONS ROOFING

Roof repairs and re-roofs
Chimney repairs / Leadwork
Flat roofs etc (no VAT)

Duffield based
01332 841488

40 years in business locally



DAVID GREY
PROPERTY MAINTENANCE
AND REPAIR

NEED A HANDYMAN!

David Grey's Property Maintenance

**"One Man
one bill"**

- Plastering
- Plumbing
- Tiling
- Painting
- Dripping taps
- Minor Electrics
- Carpentry
- Fencing



01332 881 801



07724 500 204

Dressmaking Alterations and Repairs

upcycle/recycle your clothes

*Quick, friendly and helpful service
at moderate cost*

Contact Sandra 07554 193352

ACCESS LOCKS DERBY LTD

6 Marsden Close, Duffield

Tel: **01332 842852**

Mob: **07737239388**

- Local Family Run Business
- Established 12 Years
- Full Locksmith Service
- Senior Citizens Discount

Website: locksmithderby.com

Email: accesslocksderby@aol.com



A FAMILY RUN
PRIVATE NURSING HOME

BROOKFIELDS
Private Nursing Home

Professional nursing,
residential, respite
& recuperation care



Please scan this code
to visit our website

488 Burton Road, Littleover, Derby DE23 6AL 01332 343840 / 348395
enquiries@wearebrookfields.com / wearebrookfields.com

BRANCH OFF
TREE SERVICES

All aspects of tree work undertaken to
British standards 3998 by fully insured and
NPTC qualified professional arborists. Also
stump grinding (stump removal) carried out.

Call: 07855 607 203 or 01335 214 137

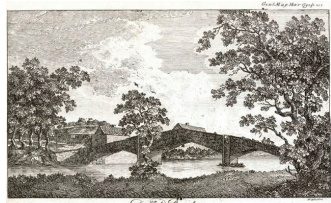
DUFFIELD & DISTRICT HERITAGE FEATURES – BRIDGES

Duffield has several bridges spanning rivers, road, and railways including pedestrian bridges and two bridges of rare and complex construction. Until the 16th or 17thC the river Derwent was crossed by using up to four different fords! Two of these were at separate places on the meander beside Eyes Meadow, another near the confluence with the river Ecclesbourne, and one at nearby Milford - from which that village got its name.



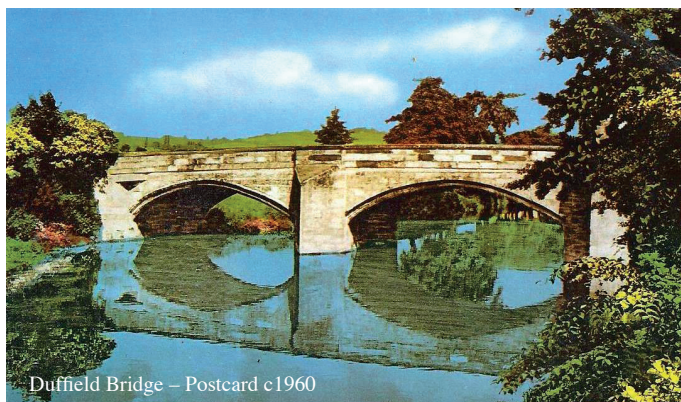
Site of old ford.

When water levels are low the obvious location for the ford across the river Derwent just above Duffield Bridge can still be glimpsed. Clearly these crossings were dependent on water levels and became impossible with the river in full spate. However, just as in the song by Simon and Garfunkel the first 'bridge over troubled water' on the Derwent was constructed at the convergence of major routes beside St Alkmund's church.



Duffield Bridge in 1792

Thought to have been built in the late 15th/early 16thC it was first described in the *Gentleman's Magazine* in 1792 which shows, somewhat exaggerated, the pointed nature of the original arches. The bridge has three segmental shallow pointed double chamfered arches



Duffield Bridge – Postcard c1960

with parapet and protrusions known as **cutwaters**. These are a feature of most multi-span stone arch bridges designed to improve the hydraulic properties of the bridge by preventing scour, and the accumulation of debris against the piers.

A cutwater tends to encourage floating objects to slide under the arches rather than staying there. Downstream these are triangular, but after widening in 1803 the piers were provided with rounded cutwaters upstream. Although triangular cutwaters slice the water neatly, their tips are prone to damage from high-velocity debris, so a more bulbous design upstream is less vulnerable and provides better protection - mostly.



Not always fool proof!

Look carefully from the riverbank and you will see a small gap between the original and extended bridge. More easily discernible is the contrast between the original pointed **parapet coping stones** and the rounded 1803

replacements. Although the original bridge has stood the test of time, in 1771 it had to be specially insured against collapse when stone pillars for use in the building of Kedleston Hall were brought from a quarry at Horsley Castle. The pillars weighed up to seven tons each and were transported on farm waggons drawn by twelve horses!



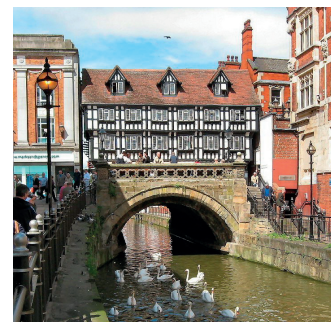
Duffield Bridge, old (right) and new coping stones



Old London Bridge

The old London Bridge may have long gone, but High Bridge over the River Witham in Lincoln is the oldest bridge in the United Kingdom which still has buildings on it. That bridge was built about 1160 AD on which a chapel dedicated to Thomas Becket in 1235 was built on the east side. Other buildings were added in c1550. Duffield's only claim to something similar is that until recently the Chapel Street Bridge had a public convenience attached! The only bridges with adjoining buildings in

Duffield are those over the Ecclesbourne on Town Street and Chapel Street.



High Bridge, Lincoln

The river Ecclesbourne, a tributary of and much smaller than the Derwent, was prone to regular 'flash flooding' at which time any fords became impassable. Thus, the picturesque Town Street bridge was erected in 1819 to replace an earlier structure, this time with two segmental arches (one adjoining Tamworth Street at an oblique angle) together with round cutwater. A 'New Road', renamed Chapel Street in 1904, with a single segmental-arch bridge was built in 1838 due to the continued flooding of the old Turnpike road beside The King's Head.



Town Street Bridge, d.1819

Along Tamworth Street a stone bridge from 1844 crossed the Ecclesbourne at the bottom of Fisher Lane, while around the corner at the bottom of Crown Street a small stone bridge leads to the former lower mill on Duck Island, with two on Snake Lane, where once stood the 'King's Mill'. All these were rebuilt during flood alleviation works with little finesse or detail using a flat concrete slab.

DUFFIELD & DISTRICT HERITAGE FEATURES – BRIDGES



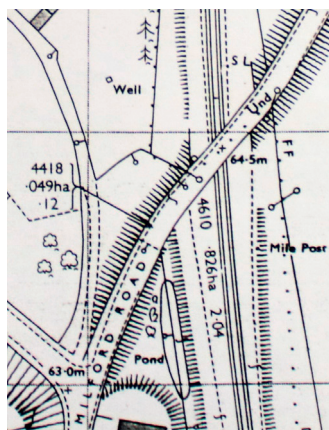
Stevenson's Milford Road 'skew' bridge over the railway

The most prodigious bridges through Duffield, however, came with the construction of Stevenson's North Midland Railway. A majestic five segmental arch bridge carries Makeney Road over the line, a small arched bridge crosses the Ecclesbourne, an elliptical arched bridge carries the rail over Cockpit Lane while a three-span bridge took the realigned, 'New Mills Road' Turnpike road, now Milford Road, over the line.

This latter is of the greatest interest and technologically was engineering brilliance ahead of its time! Built at an oblique rather than a right-angle, and based on a **helicoid** (spiral), it is known as a '**skew bridge**'. This is one of several similar **overbridges built in 1836-40 for the railway to the designs of George and Robert Stephenson**, with Frederick Swanwick, between Derby and Matlock; notably at Ambergate (5 span), and Cromford (dual span), both incorporating viaducts.

A skew arch (aka oblique arch) is a construction method that enables an arch bridge to span an obstacle

at other than a right angle. This results in the faces of the arch not being perpendicular to its abutments and its plan view being a parallelogram, rather than a rectangle which is the plan view of a "square" arch.

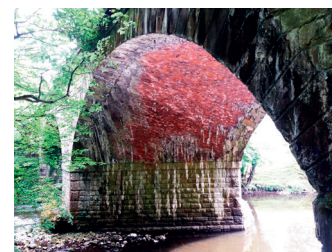
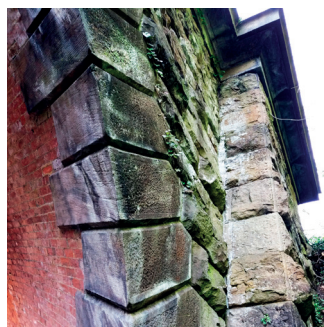


1914 OS map showing the 'skew' angle

The problem of building skew arch masonry bridges was addressed by a number of early civil engineers and mathematicians, including local engineer Benjamin Outram. Their construction eluded the eminent canal engineer James Brindley and consequently all his overbridges were built at right angles to the waterway, with double bends in the roadway.

To this day many of them cause inconvenience to their users. However, it was George Stephenson who pioneered the first skew design for a road over a railway on the Liverpool to Manchester line at Rainhill village in 1830 using sandstone blocks.

A masonry skew arch requires precise stonecutting, as the cuts do not form right angles. Once the principles were fully understood in the early 19thC, it became considerably easier and cheaper to build a skew arch of brick. The North Midland bridges incorporate both stone and brick and show the helicoidal nature of the construction with bricks on the skew. In complete contrast the Milford Road bridge over the Wirksworth branch line is simply constructed of large wrought iron slabs.



Complex voussoirs and helicoidal brickwork, Cromford

Of course, in this coverage of safe crossings we can't leave out Duffield's three significant pedestrian bridges: two over the Midland Main Line and one over the Wirksworth branch. The station and branch line bridges are of a wrought iron **lattice truss** design using many small, closely spaced diagonal elements, combined with scrolled bracing, and supporting beams. Similar construction can be seen at the famous Benneley Viaduct between Nottinghamshire and Derbyshire. The modern steel girder footbridge on Church Walk seems to have all the strength but no finesse.



Lattice truss footbridges, Duffield Station, and The Pastures.



Church Walk steel footbridge

Finally, a word of caution. Please be careful of passing traffic should you decide to use one of our river bridges for playing '*Poo Sticks*'!!



Stevenson's Five Arches Bridge

by **Robert Reid**

TRANQUILITY AT THE CORNISH COAST

The tiny yellow bird's foot trefoil plants were dancing in the warm breeze along with the small purple knapweed blooms - all that was left of the blossoms of summer on this headland above the sea. The thrift flowers had come and gone and there was a sense of the beginning of autumn.

Above, the herring gulls patrolled the sky calling to each other and black cormorants bobbed on the shallow sea swell before diving for fish. On a small rocky outcrop on the sea's edge wet birds stood with their wings held out drying in the sun. A small flock of finches flew over into the nearby fields and a grasshopper climbed a dead grass stalk to get a better view of its world. Blue and silver, the sea moved gently up and down - the surface only briefly broken by the passing pod of dolphins whilst the sky on the horizon was etched with tall cumulous clouds signalling change.

Out of the corner of my eye I caught sight of a small common blue butterfly quartering the yellow flowers, pausing for a quick drink of nectar from each one before fluttering over the low wall behind me - defying the wind. Before long there were six of them - landing for a few seconds on each bloom before flying out of sight.

These little blue gems usually fly between April and October and can be found across the country including

on wasteland, heathland, woodland edges, parks and gardens. These were mostly males with very bright blue wings with brown borders and white fringes.

A beautiful clouded yellow butterfly followed a similar route pausing briefly at each flower in the hope that there was some food left. Sometimes mistaken for the brimstone, its yellow colour was warmer and less acidic.

A lone walker passed by - calling out a cheerful good morning he strode purposely along obviously determined to cover some miles before lunch. I was quite happy perched on the grass reading my book and observing nature. My only goal was to relax and to enjoy my own company and what was around me. However it did remind me that lunch was imminent and reluctantly I clambered down and returned to the path leading back to the small fishing village.

There were not many people around. Most were on the beach enjoying the sun, sand and sea. I gave my order and found a seat and table overlooking the harbour where I could watch the boats coming and going, the paddle boarders practising and the children catching crabs with

squeals of glee as they pulled up yet another one to add to their haul in their buckets. Hot in the shelter of the buildings - before long I was joined by opportunistic herring gulls

vying with each other to get near enough to steal my lunch or be rewarded with a thrown morsel!

These beautiful birds are very vocal and epitomise the seaside as their calls are usually the first indication of being at the coast. Their single note mewing sound is usually to attract attention and the male birds often assume a dominant upright stance before arching their necks and issuing loud, laughing calls. At the end of summer the juveniles who have yet to acquire their full plumage follow the adults around begging to be fed by bobbing up and down, gesticulating by pecking at the side of the beak of the adult and making a wheezing whistling sound. They are hoping the adult bird will regurgitate something for them to eat and are disappointed but undeterred when this does not happen.

Habituated to humans around harbours and docks, herring gulls can become a nuisance for anyone wishing to eat in peace! They are known

to try and steal food, raid rubbish bins and can be quite aggressive when protecting their nests. They have favourite roosts and as they are long lived - between 10-20 years; researchers have discovered they can recognise individual human faces - especially those belonging to people who feed them! Whilst they can be intimidating, these birds are magnificent with their yellow beaks, predominately white and grey plumage and eyes that are forever on the lookout.

Peace and quiet shattered, I finish my meal and walk along the harbour front admiring the boats bobbing in the water. Home to over a hundred ranging from skiffs to sailing boats, gigs to fishing boats and larger pleasure boats - the safe mooring is protected from the storms from the Atlantic by a purpose made harbour gate. In anticipation of the weather change, I watched large beams being lifted by a crane and slotted into place one on top of another to stop the sea surging - crashing the assembled craft and flooding the town.

I was sorry to leave Porthleven. It had afforded me some beautiful moments of pause in amongst the busyness of normal life. Now for Autumn on the meadow.

by **Di Hancock**
Chair; Duffield Millennium Meadow Conservation Trust
07511230320



Insights Counselling

Experienced counsellor based in Duffield providing short and long-term therapy for adults

Counselling can help you make positive changes that are right for you for issues including: low self-esteem and confidence, anxiety, panic attacks, depression, bereavement, trauma and abuse

Supervision for trainee and qualified counsellors

Mental Health Awareness training
Staff counselling, supervision and training

For further details please contact
Jayne on 07971 601436

www.insightscounselling.co.uk
info@insightscounselling.co.uk

HOLBROOK HALL RESIDENTIAL CARE HOME



AN ELEGANT AND SPACIOUS FAMILY RUN CARE HOME SET IN BEAUTIFUL SURROUNDINGS WITH AN EXCELLENT REPUTATION



COVID 19 POLICY

Holbrook Hall remains alert to the risks of COVID 19 and has a robust regime of infection control whilst our high standards of care enhances our resident's quality of life.

We welcome new permanent or respite residents subject to our strict admission process.

Please contact us on
01332 880698
or email holbrookhall@aol.com



HOLBROOK HALL

QUALITY CARE FOR THE ELDERLY

WWW.HOLBROOKHALL.CO.UK

Hunters

Large sofa for the price of a Medium. Medium sofa for the price of a Small with our Collins & Hayes promotion this October!

Babington Lane, Derby.
DE1 1SY
t. 01332 349285
huntersfurniture.co.uk

Offer ends 21st November please ask in-store for terms & conditions.
Applies to our Heath & Miller models.



Heath sofas



Duffield Parish Council



Vacancy – Parish Clerk

Following the very sad loss of our Parish Clerk Jane Terry as announced in the previous Scene, we are now advertising the vacancy for a new Parish Clerk, working 20 hrs/week from the Parish Office at Cemetery Lodge, Hazelwood Rd, Duffield (some remote working will be considered). Applicants should have some previous Clerking or Local Government administration experience and preferably a knowledge of the local area.

The deadline for applications is the 13th October – please see the Parish Council vacancies page for more information: www.duffieldparishcouncil.gov.uk/vacancies.html

Fireworks Display at Eyes Meadow – 4th November 2022

We announced in the Duffield Scene in September that owing to the loss of Jane, the fireworks evening in November would not take place. However, since making this announcement, the Duffield Community Association have very kindly offered to step in and run the fireworks evening and is looking for volunteers to help out with the event.

If you can help please contact the DCA. To find out more about the event, see their website www.duffieldvillage.co.uk and Facebook page.



Duffield Remembrance Parade – 13th November 2022

The Remembrance Parade will still take place on November 13th and as was already planned, in 2022 this will begin at Eyes Meadow Changing Rooms at 10:30am and continue along Donald Hawley Way along to the War Memorial outside the church, with the Memorial service taking place at 10:55 – 11:15am.

Please be aware that Donald Hawley Way and Church Drive will be closed to traffic between approx. 10am and 11:30am to allow the Parade and Service to take place. If you are taking part in the Parade, please use the pedestrian entrance along Cockpit Lane (footpath alongside Appletree Medical Practice) to access the Meadow.

Parish Council meetings are open to the public to attend to listen or address the Council on any Parish issues. Correspondence from Parishioners is also reported to the meetings.

Forthcoming meetings – The next **Full Council** meeting will be the 2nd November meeting at the Weston Centre. **Committee Meetings:** Outdoor Management and Development Committee Meeting 19th Oct 2022; Finance & Management Committee Meeting 16th November 2022, both to be held at the Cemetery Lodge meeting room. Meetings begin at 7pm and all are welcome to attend.

Meeting Agendas and Minutes can be viewed online at www.duffieldparishcouncil.gov.uk

The Parish Office

Cemetery Lodge, 43 Hazelwood Road, Duffield, Belper DE56 4DQ.
Telephone 01332 842740.

For all enquiries please email assistantclerk@duffieldparishcouncil.gov.uk



@DuffieldParCoun



Duffield Parish Council



www.duffieldparishcouncil.gov.uk

PASSING ON YOUR WEALTH

Leave a lasting legacy that means the world to you



There is more to inheritance than money and property.

Your legacy is as personal as your fingerprint. It extends beyond financial wealth, encompassing everything that defines you – from your core values and vision for the future to the knowledge, wisdom and experience you acquire over your lifetime.

Legacy planning captures all of these elements and builds a wealth management strategy around them. Its aim is to give your beneficiaries a clear sense of the direction you would like them to take – so they can keep your legacy alive and aligned with your wishes for generations to come.

Talk to us about legacy planning.



Find out more about legacy planning

INVESTMENT PLANNING | RETIREMENT PLANNING | LEGACY PLANNING



AMG WEALTH
MANAGEMENT

Tel: 01332 551155

amgwealthmanagement.co.uk

Senior Partner Practice of St. James's Place Wealth Management

Park Farm Drive | Allestree | Derby | DE22 2QP



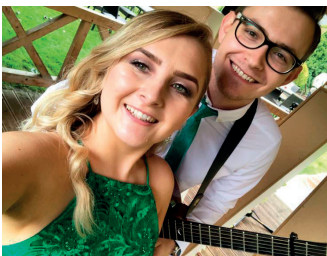
AMG Wealth Management Ltd is an Appointed Representative of and represents only St. James's Place Wealth Management plc (which is authorised and regulated by the Financial Conduct Authority) for the purpose of advising solely on the Group's wealth management products and services, more details of which are set out on the Group's website: www.sjp.co.uk/products. The 'St. James's Place Partnership' and the titles 'Partner' and 'Partner Practice' are marketing terms used to describe St. James's Place representatives.

NEWS FROM THE WESTON CENTRE



Evening Events

We had a full house for our first evening event on Saturday 17th September. David posed seven rounds of challenging questions on a range of subjects from airline badges to Derbyshire and seven teams battled it out to win the coveted prize of beer donated by Tollgate Brewery. During an interval we tucked into a delicious supper from Duffield Fish and Chips and the bar was kept busy all night. Much fun was had by all.



Our next event on Saturday 22nd October is the **GRK Collective**. Georgia and Jackson, a former Duffield resident, are a sought-after duo based in Greater Manchester. They will play a selection of well-known songs from the 1950s to the present day and give everyone a chance to tap their toes or even strut their stuff!. Why not check them out on Facebook under Georgia Rae K?



On Saturday 26th November **Tom Brooksby**, front man in Bruce Springsteen tribute band 'Glory Days' and

seasoned solo performer will be performing at the Weston Centre. Tom is well-known nationally for his magnetic performances and regularly sells out much larger venues. He will perform an acoustic set of well-known Americana. This is one not to be missed so get your tickets early. You can listen to him on Apple Music and Spotify for a taste of what will be in store.

Christmas Quiz

Following the success of our Supper Quiz we are looking forward to an early festive opportunity on 3rd December when David will challenge us with a range of questions on a festive theme. Why not bring a team, decorate your table (and yourselves!) and enjoy your favourite nibbles by bringing your own Christmas foodie treats?

We are pleased to now have the facility to take card payments. Minimum charge £1.00.

European Film Cub

The first film 'Tais Toi' starring Jean Reno and Gérard Depardieu clearly unlocked a demand for international films in the village as this was very well supported. Many thanks to Delyth for running this. Tickets cost £4 and drinks are available from our bar for an additional charge. Check our website for news of future films and dates.

Film Club

Our November film on Thursday 3rd November is 'An audience with Ken Dodd'. This was made to mark his 40 years in show business and was filmed before a live audience. Doors open at 1.30 pm, and the film starts at 2.00 pm. Once again, the bar will be open for those who fancy something stronger than tea or coffee. Entrance is just £3.00. Thinking ahead to Christmas, you might like to book your

ticket for our screening of the all-time favourite 'It's a Wonderful Life' starring James Stewart, Donna Reed and Lionel Barrymore. We'll be showing this on Thursday 1st December to start the festive season with the warm feelings of loveliness this fabulous film evokes.

Memory Café

Do you have time to help others one Friday afternoon each month? We are still looking for volunteers to help set up and run a monthly Memory Café for people living with dementia. This will take place on Friday afternoons between 2.00pm and 4.00pm. You will have our charity's support, a small budget and lots of appreciation and good will. If you are able to spare some time or expertise, we'd love to hear from you. Please contact Sarah on sarah.sdm@westoncentre.org.uk or 01332 840349.

Cannasta

Would you like to learn to play this intriguing and unusual card game? David is eager to set up a group at the Weston Centre and share his love for and expertise in the game. If you are interested please contact us and we will pass on your details.

See our website for all our latest news www.westoncentre.org.uk

Regular Events

- **COFFEE MORNINGS** 10.00-12.00noon Tuesday to Friday. A bottomless cup costs just £1.00. Just drop in, no booking required.
- **LUNCHEON CLUB** each Monday. Please contact Jean via the Centre to be placed on the waiting list.
- **FILM SCREENINGS** on the first Thursday of every month. Doors open at 1.30pm, the film starts at 2.00pm. We ask for a donation of £3.00 which

includes a cup of tea or coffee. Phone Sandra on 01332 928577 for further details and to reserve a seat.

- **ART GROUP** 2nd 3rd and 4th Thursdays, 1.30-3.30pm. No experience necessary and materials are provided. The cost is £5.00. Phone Jeff on 01332 585426 or 07930 841538 for further details and to book a place.
- **iPAD COACHING** We have a small number of iPads to lend. Complete beginners encouraged! Contact Sarah at the Weston Centre on 01332 840349 if you would like to join the waiting list.
- **CHAIROBICS** every Monday afternoon and Friday lunchtime. Phone Suzanne on 07810 023743 to book a place.
- **MINIBUS DAY TRIPS** to various places of interest. Please contact the Weston Centre on 01332 840349 for details.
- **WALKING GROUP** A friendly walking group departs from the Weston Centre each Tuesday at 10.00am (meet at 9.45am). For further information contact Chris on 07977 140415.

Are you looking for a venue to host your event or a minibus to transport your group?

The Weston Centre is available to hire for clubs, societies, children's birthday parties and meetings. We are located in Tamworth Street and share a car park with the Viceroy Restaurant where we have five allocated parking spaces next to the Centre. Our kitchen is well resourced, and we have excellent audio-visual facilities too. Our 17-seater automatic transmission minibus with tail lift is also available for hire. For further details please see our website or contact Emma on 01332 840349 or emma.admin@westoncentre.org.uk.

DUFFIELD FIREWORKS 2022



The Duffield Parish Council is unable to stage the annual Fireworks night this year due to the sad loss of the very able Jane Terry, Clerk to the DPC. Jane was the primary driver when it came to the DPC's running of the Fireworks event.

The DCA is able to step in and stage the event on **Friday 4th November**, the event will go ahead... **provided we have some volunteers to help stage the event under the direction of the DCA.** Volunteers are required to:

- Erect fences on the afternoon of Fri 4th
- Set up lighting etc.

- Dismantle the fences 8pm onwards on Fri 4th
- Litter sweep the area before football on Sat 5th
- Collecting tickets/money on the gate
- Sell glow sticks

To the people and organisations of Duffield If you want the Duffield Fireworks to go ahead, then please give the DCA a couple of hours of your time. Contact Nigel Hooker on nigelmax@me.com or 07712 079730 to register your support.

If going ahead; Entry to the Fireworks will be by tickets only. Available in October from Duffield News.

Springwood House Residential Care Home

Duffield Bank, Duffield, Derbyshire DE56 4BG



Springwood House is a friendly, family run Residential Home celebrating it's 40th year. We will change the way you view care by providing a personalised, inclusive service within a country house hotel atmosphere.

HERE ARE A FEW OF THE SERVICES WE PROVIDE:

- Long Term 24 Hour Care
- Short Term Care, Respite and Convalescence
- Day Care with a Bath & Home-Cooked Meals
- Busy social calendar, activities and trips out
- Visiting Hairdresser & Chiropodist

We are proud of our CQC report, achieving 'GOOD' in every category

Tel: 01332 840757 / 07775 847843
email: springwoodhouse@gmail.com



Providing support as individual as you are

Live-in care
in your
own home

a realistic alternative

Contact one of our professional team:

01773 880055
Bluebird Care Derbyshire Dales & Amber Valley
6 Bridge Street, Belper Derbyshire DE56 1AX

www.bluebirdcare.co.uk/derbyshire-dales-amber-valley
Derbyshiredales@bluebirdcare.co.uk

