



DUFFIELD SCENE

MARCH 2023

Edition 365
Published Monthly

Ellis-Fermor & Negus

SOLICITORS

Helping People,
Solving Problems



BELPER • RIPLEY • BEESTON • LONG EATON

Belper 01773 821665

Lexcel

www.ellis-fermor.co.uk

BUSINESSES SAVE MONEY REDUCING PLASTIC

“In 2018 Duffield folk told me they wanted to reduce the amount of Single Use Plastic [SUP] going to landfill” says Councillor Dave Wells “so I launched Plastic Free Duffield.”

Villagers soon formed a Steering Group which achieved the first of five objectives needed to achieve Plastic Free Community Status. We soon passed two more by getting Duffield Parish Council’s support and with community activities including several litterpicks.

The Covid lockdown slowed progress but we have now



achieved our fourth objective with our five Plastic Free Champions, businesses that

have removed at least three items of SUP and plan to remove more.

First came the Town Street Tap, then the Kings Head, the Riverside Café and the refill businesses R3-Fill. Hairdressers Holland & Fuertado are pictured here, receiving their Award from PFD’s Linda Potter. “We are saving £100 a month since reducing single use plastics” says Lisa Fuertado.

Plastic Free Duffield look forward to welcoming more local businesses becoming Plastic Free Champions – Kale & Corn are awaiting accreditation, Bradmans have also removed 3 SUPs and Croots are working towards it.

... continued on page 3.

THE PATTENMAKERS ARMS

— DUFFIELD —

Opening in March

CARWISE



Award-winning service from your local garage

- We hand-pick used cars for choice, quality and value
- We look after all of your motoring needs:
 - Service, repair, MOT, electronic diagnostics;
 - Tyres, air conditioning;
 - Accident repair.
- Please read our customer feedback



Call us on 01332 840779 or visit:

www.carwisederby.com

CARS BOUGHT FOR CASH



DUFFIELD SCENE

Established August 1992

All information, letters, news, articles, diary events, photographs and suggestions should be

marked "Duffield Scene" and sent to:
Duffield News, Town Street, Duffield.

Telephone: 01332 898 898

Email: info@duffieldscene.co.uk

Web: www.duffieldscene.co.uk

The Duffield Clinic

Eyes + Ears + Feet

6 Wirksworth Road
Duffield, Derbyshire DE56 4GH

team@duffieldclinic.co.uk

www.duffieldclinic.co.uk

01332 843666

Our services:

- + Eye tests
- + Contact lenses
- + On-site glazing
- + Corporate eyecare/VDU/safety glasses
- + Skin rejuvenation
- + Botox & fillers
- + Podiatry
- + Ear wax suction
- + Audiology/Hearing aids
- + **FREE** Hearing tests

**HOME VISITS
EVENING APPOINTMENTS**



PC-BMI

COMPUTER & MEDIA SERVICES

- PC Repairs & Upgrades
- Apple Mac Repairs & Upgrades
- Business Services & Networking
- New PC's & Laptops
- Virus Protection & Removal
- Software & Tuition
- Backups & Data Recovery
- PC Health Checks
- VHS & Slide to DVD Transfer Service



We visit your home or business

www.pc-bmi.co.uk

Tel: 01332 830888 Mobile: 07894 309024

Finding the right solution for you



Coxbench Hall

Quality Residential Home

Drop in to see us, browse our website or telephone for a brochure and DVD.

Alfreton Road, Coxbench, Derby DE21 5BB

- ◆ Superb home cooking, catering for special diets
- ◆ Extensive entertainment and activities on offer
- ◆ Outings in our own minibus
- ◆ Beautiful gardens in the National Gardens Scheme
- ◆ Highly trained staff
- ◆ All rooms have call system, TV and telephone
- ◆ Most rooms are en-suite
- ◆ Weekly and long stay options available
- ◆ Free day's stay for potential Residents

Telephone: 01332 880200 Email: office@coxbench-hall.co.uk

Web: www.coxbench-hall.co.uk

Coxbench is about caring

GRT ARCHITECTURE

E: enquiries@grtarchitecture.co.uk
T: 01629 825 491

1-3 Greenhill, Wirksworth,
DE4 4EN



REDUCING PLASTIC THE WESTON CENTRE

From the cover...

Dave is pictured here presenting the coveted Plastic Free Champion plaque to R3-Fill's Cathryn Wilkins making a plastic free delivery to Green Campaigner, Eva Long.

Now we need your help to achieve the fifth objective of 15 Community Allies. If you belong to a community organisation [school, sports club, venue etc] please get in touch plasticfreeduffield@gmail.com.



it began in 1990. Roger, Chair of Trustees, was pleased to present her with a small token of our ongoing appreciation.

Helping to Keep The Cold at Bay

Maggie, one of our coffee morning team, responded to Radio Derby's appeal for knitted blankets to support people through this cold winter. She organised a team of cheerful knitters who have created and sent off 30 beautiful woollen blankets. A special mention to Janet who alone knitted more than 300 squares! Well done ladies and thank you.

A Thank You to our Team

On Thursday 2nd February Trustees were delighted to welcome more than thirty of our fabulous volunteers to a drinks and nibbles reception at the Weston Centre. Quite simply, our charity would not be able to offer the range of activities it does without the dedication and support of our volunteers. It is they who provide lunches on Mondays, hot drinks and good company on Tuesdays to Fridays, drive the minibus, run our film clubs and excursions, maintain the Weston Centre and ensure our facilities and services are well managed. One of our longest serving volunteers is Jean who has run our Monday Lunch Club since



The United Benefice of Duffield and Little Eaton

TOTS Group
Friday Mornings
10am - 12 Noon
St Alkmund's Church Hall

Overwhelmed by Tech? We're Here to Help.

- Phone/Tablet & Computer problems
- Lessons tailored to your needs
- Internet safety & antivirus
- Buying advice, installation & setup
- Business and website services

For a **FREE**, no obligation assessment/quote at your home or business, contact Andrew King.

T: 07494 535993
W: www.derbyshiretechhelp.com
E: andrew@derbyshiretechhelp.com

DTH
 Derbyshire Tech Help

TRUSTED TRADER
 Derbyshire County Council

euronics

Let's Make Life Easy

Great Products. Great Prices

Enjoy our range of top brand appliances at low prices

Expert Knowledge | Super Service
 Competitive Prices | Professional Installation

Blomberg
seit 1883

SONY

SIEMENS

ROBERTS

BOSCH
Invented for life

Hotpoint

Lec
Pure Refrigeration

Panasonic

For your next LED TV, Washing Machine, Refrigeration and Built-in and freestanding appliances

LESTER & NIX

We deliver and install locally
 We advise and care
 We can remove your old appliance

www.lesterandnix.co.uk
01773 822828

DERBYSHIRE PROPERTIES
SALES | LETTINGS | HOLIDAY LETS

Local Estate Agents
providing a personal service



Contact Matt Ellis for an up to date valuation
Office: 01332 316715 Mobile: 07581 369070

Pride Place,
Caesar Street,
Derby DE1 3RU



213086

- Central Heating • Boiler Installations
- Boiler Breakdowns & Repairs
- Bathroom Suites • Taps & Valves
- Servicing & Landlords Certificates
- Unvented Hot Water Units • LPG



All work undertaken and guaranteed
Free Quotations Tel: 01332 367 070
www.prideplumbingservices.co.uk



WILLIAMSONS ROOFING

Roof repairs and re-roofs
Chimney repairs / Leadwork
Flat roofs etc (no VAT)

Duffield based
01332 841488

40 years in business locally



NEED A HANDYMAN!

David Grey's Property Maintenance

**"One Man
one bill"**

- Plastering
- Plumbing
- Tiling
- Painting
- Dripping taps
- Minor Electrics
- Carpentry
- Fencing



01332 881 801



07724 500 204

Dressmaking Alterations and Repairs

upcycle/recycle your clothes

*Quick, friendly and helpful service
at moderate cost*

Contact Sandra 07554 193352

ACCESS LOCKS DERBY LTD

6 Marsden Close, Duffield

Tel: **01332 842852**

Mob: **07737239388**

- Local Family Run Business
- Established 12 Years
- Full Locksmith Service
- Senior Citizens Discount

Website: locksmithderby.com

Email: accesslocksderby@aol.com



**Flyers • Posters
Business Cards • Booklets
Stickers • Banners**

01332 840 880
www.derbyprinting.co.uk



All aspects of tree work undertaken to
British standards 3998 by fully insured and
NPTC qualified professional arborists. Also
stump grinding (stump removal) carried out.

Call: 07855 607 203 or 01335 214 137

THE EARLY SIGNS OF SPRING

We are nearly there! The equinox on the **21st March** heralds the beginning of longer days and shorter nights and the promise of warmer weather. The countryside has been holding its breath (as have we) and responds to the change in light and the relative warmth of the sun with blooming spring flowers and the emergence of many insects and animals that have been sheltering over the winter. The first sight of butterflies emerging from hibernation is always joyous.

Whether that is the comma with its orange/brown coloured sculptured wings glowing like the embers of a bonfire or the lime yellow of the brimstones amongst the ivy; the small tortoiseshells and peacocks that may also have been resting in your house as well as in amongst brushwood piles - they are all signals that there has been warmth in the early spring sunshine.

March needs early flowers in bloom to satisfy the nectar needs of these first emerging creatures and the rosette of primroses in one of the copses for instance is a favourite and cheerful sight as are the catkins, daffodils, snowdrops and crocuses. It is not only butterflies that need early nectar as newly emerged white-tailed and buff-tailed queen bees, bee-flies, early bumble bees and dragonflies will seek it out too.

A dark-edged bee-fly

announces its presence with a low hum from its whirring wings just above head height. It is found all over Britain (but no longer in Ireland for some reason). When you catch sight of its ginger body, the long proboscis (tongue) with which it seeks nectar from deep in the flowers looks like a unicorn horn but is a precision tool. Bee-flies resemble bees for a reason. The mimicry enables the female to sneak up to ground-nesting bees, particularly mining bees, so she can deftly flick her eggs towards the burrows. When the maggots hatch, they crawl inside to devour the hapless bee larva.

There are other signs that the year has turned and that warmer days are to come.

The year's first singing chiffchaff is a moment wildlife-lovers yearn for. Repeated over and over, the seesaw ditty is rudimentary yet uplifting, and before long you will be hearing it everywhere. Odds are, birds you hear will be migrants freshly arrived from their Mediterranean winter range, though it has been estimated up to 15,000 chiffchaffs now overwinter in Britain, mainly in the south.

Data in the BTO's annual

BirdTrends report show that 40 species of bird nest earlier than in the mid-1960s, with magpies advancing their laying date on average by 20 days. Other birds breeding substantially earlier include

greenfinches, robins, great tits and swallows.

Though this might help some species, in other cases it could lead to 'seasonal mismatch', where young no longer hatch when food is most plentiful. This is the effect of climate change where the seasons are now substantially earlier and freak extreme weather events can affect the availability of food sources. This was witnessed in the drought and high temperatures last year.

"Without hedges, England would not be England," the nature writer Richard Jefferies declared in 1884, adding, "I love their very thorns."

Thorniness is, of course, highly desirable in a hedge, which is why two of the most widespread hedgerow trees are blackthorn and hawthorn. Their leafing and flowering patterns are reversed. Blackthorn flowers first, then unfurls its leaves; hawthorn greens up well before it blossoms.

The white blossom of the Meadow's blackthorn is always a sign of spring and their beautiful closely clustered flowers shine like lights against the black bare branches. The blackthorn trees and bushes around the wetland on the reserve serve to keep out animals and humans from trespassing and disturbing the wildlife in the water and on the margins. Most importantly they are beautiful.

This time of year is a good time to slow down, sit, appreciate the sunshine and admire the beautiful blossom. There will be clouds of midges dancing in the columns of light, frogs laying spawn in the ponds and toads making their way across the meadows to mate and lay theirs.

The birds will be calling songs to attract mates. The great tits sounding as though they are pumping up tyres, the robins trilling away, song thrushes perched on the tops of trees competing with the melodious blackbirds, long tailed tits dashing through the trees, buzzards mewing overhead, mallards bickering over mating rights as nature's cycle of life continues.

Soon swallows, house martins and swifts will be gracing our skies to feed on the abundance of insects.

Enjoy.

by **Di Hancock**

(Chair; Duffield Millennium Conservation Trust)

07522230320



YOUR GREEN COUNCILLORS IN DUFFIELD

Election Boundary Changes
 In May, for the first time the whole of Amber Valley will be electing their councillors for the next four years. Boundaries have been reviewed to keep pace with population changes so Quarndon will join us in a new 'Duffield and Quarndon' ward.

Big thank you as Dave Wells stands down

Dave Wells, our Green Councillor for the past four years has decided to step down. There is though, as ever, a silver lining, as we already have someone poised to step into his sustainably-sourced shoes - though it's up to you to decide of course!
 "It's been an honour to represent Duffield for the last four years as Amber Valley's first Green Councillor. I was delighted when you elected Alison McDermott as your second councillor and I'm thrilled that Eva Long will be standing here alongside Alison in May's elections.



However, in four years' time, I will be 70, so I hope you'll agree with me that I now deserve a proper retirement! I'm proud of what we've achieved together in Duffield, and many of you have said that you are too. A big thank you to everyone who has been part of this - our ever-increasing team and all the amazing people that I've had the pleasure of working with who get involved in the groups and activities that make Duffield such a great place."

Alison Talks With Duffield Meadows Pupils

Alison spent a lovely morning at Duffield Meadows Primary School at the end of January. She gave local examples for an assembly on sustainability and was impressed by the maturity and passion the young people have for both their local and the wider environment. The children at Meadows School have already done a huge amount of work to reduce single use plastic throughout the school. Year

five teacher Mrs Romans, pictured with Alison, is setting up a committee to explore more things they can do to be more sustainable.

National Green Deputy Leader To Visit

We are excited to announce that Zack Polanski the Deputy Leader of the Green Party will be paying us a visit on Saturday 25th March. He intends to visit Allestree park before going on to Belper and Horsley Woodhouse. Check out our Amber Valley Green Party website and Facebook for more details nearer to the time.



Hunters

living | dining | sleeping | kitchens | flooring | design service

Now in-store, the latest Scandinavian designs from Skovby

Babington Lane, Derby. DE1 1SY
 t. 01332 349285 huntersfurniture.co.uk



Duffield Parish Council



Coronation Weekend – May 2023

The King’s Coronation has been set for 6th May 2023. As part of the weekend, the “Big Lunch” is being organised on Sunday 7th May, where neighbours and communities across the United Kingdom are invited to share food and fun together. During the Queen’s Platinum Jubilee celebrations in 2022, the Parish Council offered the opportunity for local community groups to apply for small grants of £50 to hold street parties or other localised celebrations in the village and it is proposed to repeat this in 2023. Keep an eye on the Parish Council website for more details and if you would like to apply for a grant, see www.duffieldparishcouncil.gov.uk/council-grants.html - to find out more about the “Big Lunch” visit www.edenprojectcommunities.com/the-big-lunch.



New Toddler Swings at Gray Recreation Ground

The Parish Council has recently replaced the toddler swings at Gray Rec play area as the old ones were weather damaged. We hope that the new swings provide years of future fun!



Illyria Outdoor Theatre “Robin Hood” at Eyes Meadow – 25th June 2023

Following last year’s successful outdoor theatre event at Eyes Meadow, we have again booked Illyria Theatre group who will be bringing “Robin Hood” to Duffield on Sunday 25th June. The Theatre event will form part of Carnival week with the Carnival to be held on the 24th June.

Remembrance Parade – 12th November 2023

The Remembrance Parade’s route was changed to Eyes Meadow in 2022 but following feedback from residents and the uniformed organisations, the Parish Council has decided to return to the usual Town Street route in 2023 subject to being able to organise this in a safe way. As part of this, the Parish Council is seeking volunteers to form part of a group to safely close roads on the day of the Parade. If you can help please contact the Clerk – clerk@duffieldparishcouncil.gov.uk

Parish Council meetings are open to the public to attend to listen or address the Council on any Parish issues. Correspondence from Parishioners is also reported to the meetings.

Forthcoming meetings – The next **Full Council** meeting, and the **Annual Parish Meeting**, will be the 8th March 2023 meeting at the Weston Centre.

The following **Committee Meetings** will be held at the Cemetery Lodge office in April: Finance and Management Committee on 5th April; Outdoor Management & Development Committee on 26th April. Meetings begin at 7pm and all are welcome to attend.

Meeting Agendas and Minutes can be viewed online at www.duffieldparishcouncil.gov.uk

The Parish Office

Cemetery Lodge, 43 Hazelwood Road, Duffield, Belper DE56 4DQ.
Telephone 01332 842740.

Contact the Clerk

clerk@duffieldparishcouncil.gov.uk or call 07719 103015 (emergency contact).

Cemetery Enquiries

contact the Assistant Clerk at assistantclerk@duffieldparishcouncil.gov.uk or call 07514 871801.



@DuffieldParCoun



Duffield Parish Council



www.duffieldparishcouncil.gov.uk

DUFFIELD PARISH COUNCIL CHAIRMANS REPORT 8th MARCH 2023

2022 has been a busy year for the Parish Council with positive progress and many successes to report. It has however, also been a difficult year as in August, the Council received the devastating news that Jane Terry, the Parish Clerk, had passed away following a battle with an aggressive form of cancer. Jane is very much missed by the team and her dedication and commitment to the parish will be evident for many years to come through her work and achievements during her time as Clerk. Assistant Clerk Jackie Clements, supported by our Admin Assistant Dee Fitzgerald and Finance Officer David Melsome, ably navigated the Council through the subsequent difficult months and continue to offer their expertise and diligent attitudes to their roles. Village Warden Michael Forkin and Groundsman Michael Hutchinson have continued to provide an exceptional standard of work maintaining the Cemetery grounds, Gray Recreation Ground, Eyes Meadow and the village in general. The Council would like to thank the team for their efforts over the year and particularly for ensuring the work of the Council continued, largely without disruption, following the sad loss of Jane.

The Parish Council is made up of 12 Councillors and serving over the last 12 months have been: Kevin Burke, Paul Greenwood, Yvonne Greenwood, Jim Grieveson (Vice Chair), Roger Harrison (Chair), Shamsa Hussain, Joe Martin, John Shoesmith, Mark Spilsbury, Nick Storer, Jan Thompson and Alice Vincent. The Council comprises 6 Liberal Democrats, 3 Conservatives, 1 Green, 1 Labour and 1 Non-Affiliated Cllr, although we try to run the Council on a non-political basis. Key Committees include the Outdoor Management & Development Committee to oversee existing assets and development of new facilities; the Strategic Development Committee to focus on longer-term needs, residents' priorities and climate change; the Finance & Management Committee focusing on compliance with our financial regulations, the annual budget, management of accounts and the precept; and a Staffing Sub-Committee focusing on resources, salary levels and recruitment. We also operate small Working Groups to focus on the Environment and Anti-Social Behaviour. We support Plastic Free Duffield and provide Councillors as a Governor of Ecclesbourne School, Millennium Meadows Committee and The RJ Weston Duffield Charity.

Village Action Plan

The Council have continued to work towards the priorities for improvements for the Village as set out in the Village Action Plan, a copy of which can be found on the Parish Council website: <https://www.duffieldparishcouncil.gov.uk/duffield-action-plan.html> The priorities identified are arranged under four themes: Traffic Management; Environment; Community and Culture and Supporting Vulnerable Residents, and an update on the Council's progress is outlined below:

Traffic Management

Parking: It has recently been confirmed that the County Council has agreed to impose "no waiting" restrictions at Ecclesbourne Avenue and Chapel Street, to designate blue badge spaces on Chapel Street and Town Street, and to designate limited waiting spaces on Chapel Street. Additional signage has been erected to direct drivers to the Eyes Meadow Car Park. We are hopeful that these changes will go some way towards improving parking capacity in the village centre. Cllr John Shoesmith continues to assess ways to improve parking in the rest of the village and the opportunities for the creation of identified cycling routes and key footpath improvements.

Community Speedwatch: The Duffield Community Speedwatch Group (chaired by Cllr Thompson) has continued to undertake speed checks around the village in 2022. Cllr Thompson attended the Community Speed Watch seminar earlier this year, where commendation was given to Derbyshire for its use of Speedwatch Groups and the police reported that speeding numbers are reduced as a result of the work undertaken.

Environment

Wildflowers: The Parish Council, as part of an environmental initiative, took the opportunity of the Theatre event in July to hand out wildflower seeds to those attending. Thanks to Hudsons Plant Centre for donating seeds. Commitment to rewilding continues and a budget has been allocated to further wildflower planting around the village.

Floral Hanging Baskets: The village looked fantastic yet again through the summer months thanks to the beautiful baskets and planters. The Parish Council has approved a small increase to the budget for the hanging baskets to ensure the village can continue to benefit from the floral displays in the coming year. Plans will be made to hopefully increase the locations of the displays for the future.



DUFFIELD PARISH COUNCIL CHAIRMAN'S REPORT 8th MARCH 2023

Ecclesbourne Meadow: Following the successful tree planting scheme at Ecclesbourne Meadow last year, further enhancements including installation of a Sensory Garden continue to be discussed and the Council is hopeful to be able to update on progress later this year.

Cycling: The Council continues to support the Derwent Valley Cycleway project. We are also currently working to assist in the installation of new cycle racks at the Co-op area on Town Street, at Meadow Vale and New Zealand Lane.

Community and Culture

Events: Our Outdoor Theatre event, the Illyria Theatre production of '*Peter Pan*' was held on 10th July 2022 on a very warm and sunny day! The Council thanks Mark and the team at The Co-Op in Duffield for donating a hamper raffle prize and refreshments for the performers and staff. Local support for these events is very much appreciated. We are pleased to announce that Illyria will return in 2023 with a matinée performance of '*Robin Hood*' on Sunday 25th June. Unfortunately, due to the difficulties faced over the Summer months following the loss of Jane, the decision was taken to cancel the Movies in the Meadow event in August and the annual Fireworks event was passed into the very capable hands of the Duffield Community Association who organised an excellent display which was very well attended and enjoyed by all. Thanks are given to the DCA for their support. The Fireworks display will be held on Friday 4th November in 2023 and will be hosted by the Parish Council and the DCA. The Remembrance Parade this year trialled the new route beginning at Eyes Meadow Changing Rooms and proceeding along Donald Hawley Way to the War Memorial outside the church which, whilst enabling safety concerns and traffic management issues to be addressed, was largely felt to detract from the importance of the event and, as a result, the Parish Council is committed to returning the Parade to its original Town Street route for 2023. The Parish Council was also happy to support the Duffield Carnival and the Eyes Have It music festival and we look forward to offering this support once again and to supporting further events in 2023.



Photography Competition/Duffield Calendar: The Parish Council took on the task of producing the 2023 Duffield Calendar. A great selection of photographs were entered by local residents and it was a difficult decision to narrow the selection down to those featured in the calendar. We would like to thank all those who contributed photographs as well as those who have purchased a calendar.

Supporting Vulnerable Residents

The Parish Council continues to support the RJ Weston Duffield Charity (Weston Centre) whose activities aim to support older people. The Weston Centre offers activities including a film club, a lunch club, coffee mornings and fitness activities. We have been delighted to help promote the new Helping Hands initiative, which will bring much needed support to the lonely and vulnerable with assistance in everyday tasks. Cllr Harrison and Cllr Thompson are Parish Council appointed Trustees of the charity.

S137 Grants

We were delighted to provide £50 community grants this year for community groups to hold street parties to celebrate the Queen's Jubilee. We are proposing to offer a similar grant fund this coming May for groups wishing to celebrate the coronation of King Charles. We also approved grants in May 2022 of £500 to Duffield Methodist Church for sanding and resealing the hall floor for the benefit of the Vision Dance Group and other community group users of the hall; in November 2022 of £5000 to the RJ Weston Duffield Charity for car park repairs and replacement / purchase of chairs for the centre; also in November of £1000 to the Duffield Community Association for Christmas Lights and in January this year for £100 to The Belper District Scouts for funding towards their 2023 America trip.

Open Spaces

Eyes Meadow: There have been a number of improvements made at Eyes Meadow. Five steel benches have been installed to replace the damaged wooden benches, along with a BBQ stand and a metal bin in the hope that damage to the grass from summer disposable BBQs will be avoided. Thanks to a grant from Network Rail and invaluable guidance and assistance from Di Hancock, the Parish Council was able to arrange for the planting of several new native trees, three of which have been dedicated as memorial trees.



**DUFFIELD PARISH COUNCIL
CHAIRMANS REPORT 8th MARCH 2023**

Cemetery and Allotments: The Cemetery continues to serve local residents. In 2022 there were 23 full burials and six ashes burials in the Cemetery, and 15 in the Garden of Remembrance. We have welcomed two new allotment tenants over the last 12 months.

Gray Recreation Ground: Gray Rec has seen installation of a “Big Rig” multi-gym, alongside the play area. This provides a fantastic facility for older teenagers and was largely possible due to the hard work of our admin assistant, Dee, in securing a National Lottery “Awards For All” grant of £10,000.00 which boosted the project funding allocated by the Parish Council. The Big Rig was officially opened in May 2022 and has been very well received. Recently we have also replaced the two toddler swings and continue to maintain the recreation ground for the benefit of residents.



Budget for 2023/2024 (1 April 2023 to end March 2024)

The annual budget for 2023/24 was set in January 2023 at £ 292,280 total expenditure, of which £43,150 is for projects to be undertaken during 2023/24. The Parish Council has set the Annual Precept at £216,300 for next year keeping the increase to 5%, which is below projected annual cost inflation in what is likely to again be a difficult year for many families as the cost of living accelerates. The National Association of Local Councils (NALC) recommends holding General Reserves of 30-60% of the Precept value and we have set a target of holding £86,520 - £108,150 General Reserves plus an additional £41,080, which have been earmarked for Specific Projects in future years for equipment replacements, footpath maintenance, building maintenance and car park repairs. Approximately 85% of our income arises from the Precept, and the rest comes from cemetery burials, allotment rents, events and income from renting out the Eyes Meadows playing fields. Staff costs equate to about 36% of expenditure.

The Coming Year ...

We have some exciting projects planned for the coming year, including various environmental projects, the installation of picnic benches at Gray Rec, footpath improvements as well as further plans to enhance Ecclesbourne Meadow.

THANKS.....

To everyone in Duffield who continues to support the objectives of the Council in enhancing facilities and services for the community, particularly the village volunteers: the many individuals who carry out litter picking, keep an eye out for elderly neighbours, run village clubs and organisations, help coach sports activities, or volunteer for the Carnival Committee; and to members of the DCA, the flood warden Luke Heaton, our footpath and tree advisers, Community Speedwatch volunteers, Ecclesbourne Meadow working group, uniformed organisations and others, our sincere thanks;

To my fellow Councillors for their tireless work on behalf of the community;

To the Council staff who continue to show commitment and dedication to their roles for the benefit of the Parish and a warm welcome to Fay Craig who was appointed to the role of Parish Clerk in November.

**Cllr Roger Harrison,
Chairman, Duffield Parish Council**

March 2023



WEEKLY EVENTS

- MON** **Coffee Morning**
10.00am - 12noon, Emmanuel Church
Opening so people have a warm place to go for free coffee, cake and a chat.
- TUE** **Walking for Health**
Meet at 9.45am, The Weston Centre for supervised walk 10.00 – 11.30, round Duffield and beyond. All welcome.
Chris - 07977 140415.
- Boys Brigade & Girls Association***
6.15 - 7.30pm, New members welcome.
£2.00. Ages 5-11. Baptist Church Hall.
01773 689983
- WED** **Ignition Youth Group***
7.30- 9pm.
St. Alkmunds Church Hall.
School years 10-13. Relaxing with a hot drink and cake, games and thinking through a section of the bible.
- Duffield Singers**
7.45 - 9.45pm
St. Margaret's Church, Hall Farm Road.
theduffieldsingers@gmail.com
www.duffieldsingers.org
- FRI** **Time Out for Toddlers and carers (TOTS)**
10.00am - 12 noon
St Alkmund's Church Hall
A new free group. Come along to play, chat, join in the fun and make new friends.
Snacks; coffee and tea on tap.
- Chairobics**
Lunchtime, The Weston Centre.
Suzanne, a practising physiotherapist, runs a friendly chair-based exercise class. Why not join her to get fit, have fun and make friends. Book with Suzanne 07810 023 743.
- Amber Painting Group**
1.30-3.30pm - Methodist Church Hall.
amberpaintinggroup@yahoo.co.uk
www.fb.me/amberpainters
- Massive***
4.00 - 6.00pm (years 7-9)
7.00 - 9.30pm (years 10-13)
Emmanuel Community Church
- TUE-FRI** **Coffee Morning**
10.00am - 12noon
The Weston Centre, Tamworth Street.
Coffee, tea and biscuits. £1 for a bottomless cup. Volunteers will ensure you are made welcome.

*term time only

MONTHLY CALENDAR FEBRUARY

MARCH

- 4** **Music at Duffield**
St. Alkmunds Church
Doors open at 7.00pm. Tom Corfield (organ).
www.musicatduffield.com.
- 7** **CHAT (Come and Have Afternoon Tea)**
Baptist Church 2.00 - 4.00pm.
Various activities for all age groups.
Come and join us for tea and a chat!
Keith Powney 01335 372153.
- 8** **Rally Together**
Duffield Squash & Racketball Club
7:00pm - Rally Together in support of International Women's Day. www.duffieldsquashclub.co.uk
- Duffield Parish Council Annual Meeting**
The Weston Centre, 7pm.
Full Council meeting, and the Annual Parish Meeting. All are welcome to attend.
- 20** **Chevin Probus Club**
Lion Hotel, Belper. 10.15am. The speaker will be Andy Smart with his chosen topic - 'What Ruddy Cucumber'!! Peter Robinson - 01332 705554.
- Holbrook Gardening Group**
Moor Methodist Church, Moorside Lane, Holbrook DE56 0TW, 7.30pm. Heather Taylor of Hudsons Plant Centre talking on "Successional planting" followed by a general Q&A session. 01773 824446.
- ### APRIL
- 4** **CHAT (Come and Have Afternoon Tea)**
Baptist Church 2.00 - 4.00pm.
Various activities for all age groups.
Come and join us for tea and a chat!
Keith Powney 01335 372153.
- 6** **Film Screening**
2:00pm, The Weston Centre, Tamworth Street.
We ask for a donation of £3.00 which includes a cup of tea or coffee. Phone Sandra on 01332 928577.
- 9-10** **Ecclesbourne Valley Railway Dinosaur Experiences**
66 million years ago, Dinosaurs roamed this earth. Now, with the help of Dinosaur Experiences - they're back! You can get up close and interact with a selection of life-like dinosaurs from giant to tiny at Wirksworth Station. A variety of dinosaurs will be appearing throughout the day between 10:00 and 16:00. We'll be operating both steam and heritage diesel railcar trains to a regular special timetable through the valley. Day Tickets:
Adult - £25.00 advance (£30.00 on the day)
Concession - £22.50 advance (£27.50 on the day).
Child - £15.00 advance (£17.50 on the day).
Family Platform Only Ticket - £10.00 from Ticket Office.
01629 20823076. www.e-v-r.com/dinosaurs/

Tell us about your upcoming event at
www.duffieldscene.co.uk or call 01332 898898

IMPROVING ACCESS AT DUFFIELD STATION

Currently, the steep steps at Duffield station prevent those with disabilities or reduced mobility, or even those with prams or heavy bags, from accessing the platforms. The conditions are even more difficult when bad weather makes them wet or icy, as we have seen this winter.

Therefore, I supported East Midlands Railways' Access for All bid for improvements to be made for step-free access at Duffield station.

Access for All provides central government funding for upgrades to local stations in order to ensure that they are accessible for people with reduced mobility.

I wrote to the Rail Minister supporting the bid, which is so important in enabling all Duffield residents to use the station and to use public transport to get around instead of being forced to drive. This is better for the environment and helps to deliver on our

legally-binding target to reach net zero by 2050.

The Transport Minister responded thanking me for my support, noting that it would be taken into account and that the successful bids would be announced later in 2023.

I have also continued my campaign to protect Ecclesbourne School. Since my last article in this magazine about the school, I have raised the issue on the floor of the House of Commons and, along with interested members of the House of Lords, sought meetings with the Secretary of State for Education and the Schools Minister.

Multi-Academy Trusts are groups of schools who pool resources and expertise, and who have a centrally directed body organising individual funding.

The Department wishes to force Ecclesbourne to join an MAT, and there is no mechanism for leaving



a MAT. They significantly reduce the independence and autonomy of a school, and this is a permanent step. Ecclesbourne's independent leadership and unique circumstances are some of the reasons for its continued historic academic success, and I believe they must be

preserved. I am grateful for the supportive comments from Duffield residents and parents of Ecclesbourne pupils, and will continue my campaign in Parliament to prevent long-term irreversible decisions being taken too hastily. by **Pauline Latham OBE MP**

THE HIGHLIGHT OF OUR HOLIDAY

After a recent performance in Haddon Hall the Duffield Singers were delighted to receive a 'Thank You' card from a couple staying in Derbyshire, describing the performance as the highlight of their holiday. They enjoyed the singing so much they watched two performances.



Singing in a choir is the perfect antidote to modern life. These days it is possible to do almost everything on the internet - shop online, work online, watch exactly what you want, listen to whatever music you prefer. The only snag is that a life like that is lonely and boring. We are sociable creatures.

By contrast singing in a choir has to be done together, as a team. The Duffield Singers sing a variety of music - folk, religious, gospel, classical, African, European, American.

It opens your ears to new music, some of which you discover you love.

The Duffield Singers sing four different voice parts - soprano, alto, tenor and bass, getting progressively lower. They blend together to make a sound that is more interesting and complex than if everyone sang the same tune. Our Director of Music, Dana de Waal, manages the blending. It's not easy, but it's a great feeling when it works.

The four parts mean that

there's a tune to suit everyone. At primary school we all sang the same tunes. During the teenage years most people's voices get lower, and many people think they can't sing, and give up in frustration, when in fact they are just trying to sing a tune that is too high for their voice. One of the lower voice parts - alto, tenor and bass, is better suited to most adults.

The Duffield Singers are a community choir, which means that anyone can join and there are no auditions.

Individuals never need to sing alone, but only as a member of a voice part of typically 6 to 12 people. New members can try different parts to see which suits them best. We each pay £80 per term for room hire and our professional Music Director and pianist.

Our next concert is not until Wednesday 21st June so it's a good time to join. New members are welcome, just come along to one of our rehearsals on Wednesdays at 7.45pm at the Catholic Church on Hall Farm Road.

EUROS WIN IMPACTS THE ‘DYNAMOS’



Jill Scott, who was part of the triumphant Lioness Euro 2022 squad, said, “the team’s biggest achievement was in raising the profile of the women’s game and encouraging more girls to get involved.” The largest ladies league in the East Midlands, the Derbyshire Girls and Ladies League in which girls’ teams from the Duffield Dynamos play, recently reported that there were nearly 2500 girls and ladies playing this season and 141 competitive teams. I spoke to Duffield Dynamo FC girls’ (under 10/11s and under 9s) team coaches, Nick Taylor and Alex Ford to ascertain whether there was any greater participation in football, as evidenced within their squads, following the UEFA Women’s Euro 2022 and appreciated their contributions.

PW : Paul Wiggins
AF : Alex Ford
NT : Nick Taylor

PW : What changes and improvements have you implemented this season?

AF : This season we have created two new teams to meet the demand from local girls. From January we will have a new Under 8s and an additional Under 11s team. This will mean Duffield Dynamos now has ten girls teams. This is an increase from just four teams in 2021. We also worked hard to improve training. It’s been tough not having Ecclesbourne School

available for midweek sessions but the club has paid for coaches from the Football Association to train the Dynamos coaches. We’ve been able to introduce more varied training sessions where the girls get to play in smaller groups and get more touches of the ball.

NT : Our challenge is to give as many girls the chance to play matches as possible. The only way to do this is to create more teams but this comes with the added pressure of having to find more volunteers to run the teams. We are always on the look out for new coaches. If you are interested, do not hesitate to get in touch!

PW : Although young, have any of the girls said they want to be a ‘lioness of the future’ and how have you responded to hopes of making a career out of football?

AF : Last season we took the girls to watch the Lionesses in a World Cup qualifier at Wembley. They loved every minute of it, especially starting the Mexican wave. The Euros victory has turned ‘interest’ into passion for many girls. We now have girls wearing England kits. They want to score winners like Chloe Kelly. They want to do the “Russo” back heel. Nick found us some rainbow-coloured captain’s armbands like Leah Williamson wears and now the girls are all desperate to be a captain.

NT : We are just trying to give the girls a good start in football with access to good training and competitive matches with the focus on fun and enjoyment!

PW : Do you think the Euros offered greater justification for using the phrase ‘girls play football’ rather than girl’s football in reference to speaking about the sport, and has a preference been employed at the club?

AF : The Euros excited everybody. It made phrases and terminology irrelevant. It was a showcase of world class football and the atmosphere in the stadiums reflected the quality of the football on show. Duffield Dynamos were one of the first clubs in Derbyshire to start a girls’ section. Every week we see how much football means to the girls and their parents who love seeing their daughters build friendships through football. The passion levels are identical to those in boys’ football which shows how good the girls’ game has become.

NT : I completely agree with Alex. The girls are given exactly the same access to training, support in coaching and matches as the boys, To us it’s just football!

PW : This year’s World Cup may encourage more girls to train and compete. Do you have future plans to accommodate greater membership and contribution?

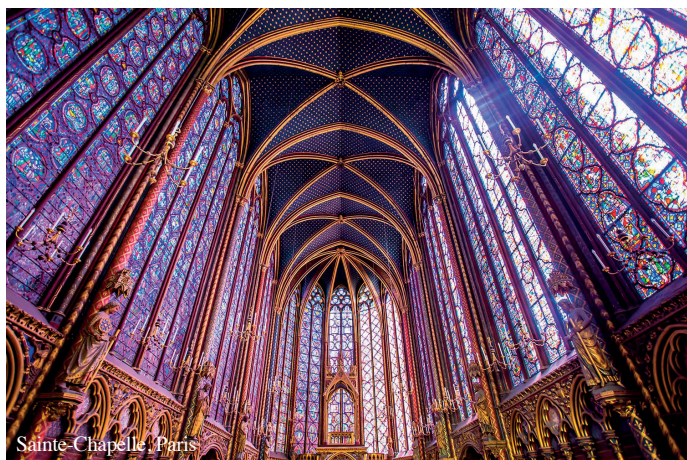
AF : The Lionesses will beat USA in the World Cup final and we’ll see another surge in demand for football at Duffield Dynamos. That said, we are looking to attract more girls right now for our teams across all age groups. We offer free trials for new girls to come along for a few weeks to give football a try and see how much fun they have. Coming out of lockdown, football played a big role in keeping so many girls physically and mentally healthy and I think we’re incredibly lucky to have so many clubs in Duffield who are committed to growing girls’ sport.

NT: We will always try to accommodate as many girls as possible. In the last week we have had another 3 girls asking to join the u10/11 teams.

Both Nick and Alex are delighted that the second weekend of football tournaments to feature girls and boys at Eyes Meadow in June is anticipated to involve 500 players on both days. What an encouraging response! If any girls or boys interested in playing football or indeed volunteers (male and female) perhaps with the desire to become a coach, wish to be involved with one of the biggest Football Association Charter Standard Clubs in the county, then please email duffielddynamos@gmail.com.

by Paul Wiggins

DUFFIELD & DISTRICT HERITAGE FEATURES – GOTHIC



Sainte-Chapelle, Paris

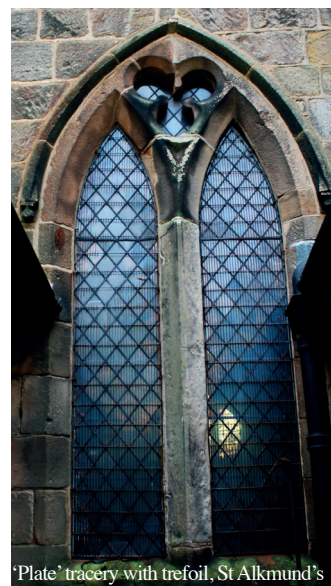
Gothic is a term used to describe the architectural styles common throughout northern Europe from the 12th to the 16th century, as part of the great age of cathedral and parish church building. It represents an attempt by stone masons to replicate 'heaven on earth'!

The Gothic style evolved in the Isle de France, firstly with St Denys and originally called "The French Style", beginning in the middle of the 12thC. Prime examples include Chartres in Normandy, Notre Dame, and Sainte-Chapelle in Paris. The first Gothic (aka. 'Lancet' or 'Pointed') style of architecture followed the Romanesque period expounded by the Normans. It is the story of the development of the **pointed arch** that, together with **buttressing** and **vaulting**, allowed stronger arches and taller/wider windows - all designed to increase height and to lighten church interiors. Gothic **towers** and **spires** created a sense of reaching heavenwards. Those of us watching the State Funeral of her late Majesty Queen Elizabeth II in

Westminster Abbey could not fail to be impressed by the scale and grandeur of a prime example of the first flowering in England of the 'new' Gothic architecture of the late 12th/early 13th Centuries - that of the **Early English (EE)** period (c.1180-1275). The most complete example of EE is Salisbury Cathedral built within a short time span (c1200-1275). Like many thousands throughout Britain the church of St Alkmund's followed the EE style of church architecture when in the late 13thC, following the building of a Norman Romanesque church, a new chancel and north transept were constructed using the 'pointed' arch, the latter exhibiting **Y tracery**; a forerunner of the exuberance to follow. Coincidentally, around this time King Henry II had required the demolition of Duffield Castle following a failed rebellion that had been supported by Lord of the Manor, William de Ferrers. It is highly probable that much of this pre-fashioned stone was 'quarried' and reused in the rebuilding of St Alkmund's in the new Gothic style.



Early English Y-tracery, St Alkmund's



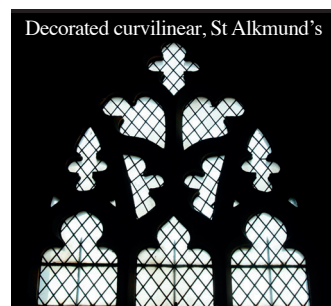
'Plate' tracery with trefoil, St Alkmund's

Y tracery developed into '**Plate**' tracery, later becoming more elaborate with ornate **trefoil** and **quatrefoil** designs. Early English was followed by the Gothic '**Decorated**' period comprising a rigid '**Geometric**' style (c1300 - 1350) which transitioned into '**Curvilinear**' (aka '**Flamboyant**') with its curving and sinuous detail, introducing features such as the net-like '**Reticulated**' tracery (from reticulum meaning net) and '**Rose**' windows. The curvilinear style is evident within the aisles of St Alkmund's.

and St George's Chapel, Windsor where Her Majesty was finally laid to rest. The east window of the chancel of St Alkmund's is a classic example of the perpendicular, made more spectacular by its 19thC stained glass.

However, as traceried widows became more fanciful, and purely decorative rather than structural, the style ossified. This was succeeded by the Renaissance that harked back to Classical Greek and ancient Roman architecture. That said, the Gothic style never completely died out but flourished again during the great period of **Gothic Revival** from the mid-18thC through the 19thC being strongly linked to Christian morality. Its advocates were the architectural critic and

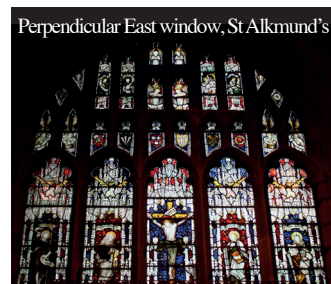
The Decorated was superseded by the '**Perpendicular**' (c.1350-1620). This was a style unique to Britain with the emphasis on the **vertical**. First used in Gloucester Abbey (now Cathedral) it has been described as "*The perfect fusion of art and architecture*". This is exemplified by the grandeur and lightness created in Kings College Chapel, Cambridge,



Decorated curvilinear, St Alkmund's



Reticulated 'net-like' tracery, Binham Priory, Norfolk



Perpendicular East window, St Alkmund's



Westminster Abbey



14thC tower and spire with 19thC 'Decorated' south aisle, St Alkmund's



Pugin's gem, St Giles, Cheadle



18thC Gothick Temple, Cumberhills



Royal Courts of Justice, Westminster



Strawberry Hill House



Revivalist 'Decorated' window, Old Girl's School, King Street

renowned arbiter of taste John **Ruskin**, and Augustus Welby Northmore **Pugin**, the designer, along with Charles **Barry**, of the Palace of Westminster. Naturally, this revival had a profound impact on the construction of new, and the restoration of medieval, churches.

Of course, we don't have to head for the Palace of Westminster because Pugin has produced relatively local examples of his revivalist style. There's Nottingham's RC Cathedral, St Marys RC Church in Derby and his sumptuous and colourful, though to some eyes over exuberant yet faithful to the medieval, St Giles RC Church in Cheadle, Staffordshire.

Gothic(k) is the name commonly applied to the light-hearted Gothic examples of the 18th and early 19th centuries, and because of its delicate and playful nature should not be confused with the later, and more structurally honest, Gothic Revival. A prime example nearby is the Kedleston Estate's Gothic(k) Temple/Lodge at Cumberhills. Originally a folly and now a house it was designed by Robert Adam in c1758-9 and exhibits a cacophony of Gothic detailing including 'stiff-leaf' foliage, crocketed pinnacles, quatrefoils, arrow slits and reticulated tracery.

Gothic Revival also translated into civic, commercial, monumental, educational, and domestic design. Manchester and Rochdale Town Halls and the Royal Courts of Justice in Westminster are a tour de force of soaring and exquisitely embellished civic Gothic. Commercial Gothic is manifest in the Midland Hotel, St Pancras Station, and monumental in the Albert Memorial, both by George Gilbert Scott. Strawberry Hill House, a villa in Twickenham, is Britain's finest example of Georgian domestic Gothic revivalism created by Horace Walpole in 1749-77. It bears a striking resemblance to castles where Princes rescued damsels in distress! Educational revival is evident at the original Girl's School

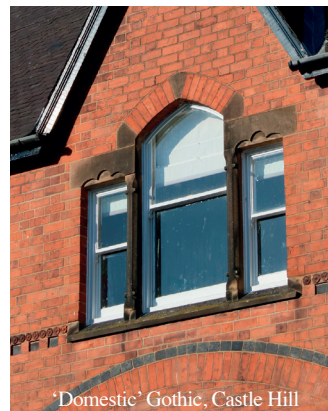
in King Street, with its almost 'reticulated' tracery, while a domestic Gothic window can be seen in Castle Hill.

Gothic was richly in evidence when establishing Duffield Cemetery in 1880 with the building of the Superintendent's Lodge with its lancets, the Cemetery North Chapel with its 'Plate' tracery (almost a 'Rose' window) and the somewhat eclectic South Chapel with its polygonal apse, buttressing, octagonal belltower with open colonnade of stumpy colonettes and rich foliage capitals.

Another significant Gothic feature was the **ribbed vaulted** ceiling whose main role was to protect the inside should a roof burn down - the feature that helped save much of Notre Dame Cathedral during the recent disastrous fire. The nearest example is that embracing the apsidal chancel within Pugin's Revivalist St Mary's RC Church in Derby.

Believe it or not there is a style of building colloquially known as **Midland or Derby Gothic!** This is the work of John Holloway Sanders, chief architect of the Midland Railway from 1845-84, who designed the station buildings along the Settle to Carlisle line, and those between Duffield and Wirksworth! Even into the 21st Century the Gothic style lives on in such contemporary items as these characterful garden/conservatory mirrors. So, if you get the chance to study any Gothic masterpieces, don't hesitate. I've only scratched the surface.

by **Robert Reid**



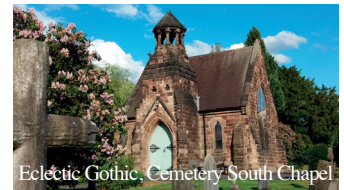
'Domestic' Gothic, Castle Hill



Lancets, Cemetery Lodge



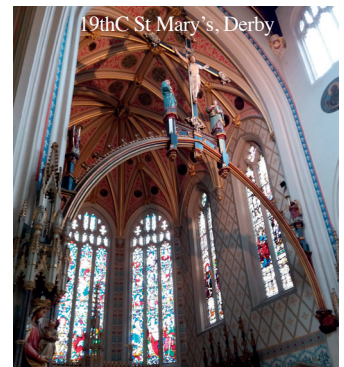
Plate tracery, Cemetery North Chapel



Eclectic Gothic, Cemetery South Chapel



E.E. Revival 'stiff leaf' foliated capital, Cemetery Lodge



19thC St Mary's, Derby



DUFFIELD COMMUNITY ASSOCIATION

Changing of the Guard

Chris Johnson has stepped down from the role of DCA Chair after some 15 years of leadership. Chris joined the DCA 25 years ago on moving to the village, and quickly became an active contributor. This along with his skills in design and communication plus an all embracing outlook made him an obvious choice as DCA Chair when Derek Cook stepped down.

Chris as leader of the DCA has been a catalyst in turning ideas into deliverable projects. He has sat through countless meetings patiently listening to arguments from all sides, steering the DCA Executive and Council to consensus and decisions. Don't be thinking that Chris was a desk-jockey, far from it, he was never slow to get his hands dirty as illustrated by the attached picture of Chris and Sally Lloyd taking a well-earned breather after lifting turf for wildflower seeding. He was regularly to be found on



Carnival Day doing everything from moving kit to picking litter. Chris has an eye for aesthetic which became apparent when he was the driving force in the painstaking refurbishment of the red Telephone Kiosk on Hazelwood Road.

We are very fortunate to have had Chris Johnson leading the DCA for so many years, however all (Chris) is not lost, he will continue as a Trustee and member of the DCA Executive committee. Thank you, Chris Johnson, from all parts of the DCA and by extension all in Duffield who have benefited from the efforts of the DCA to enhance village life. A new DCA Chair has been appointed Margaret Mathews-Higgins.

HOLBROOK HALL RESIDENTIAL CARE HOME



AN ELEGANT AND SPACIOUS FAMILY RUN CARE HOME SET IN BEAUTIFUL SURROUNDINGS WITH AN EXCELLENT REPUTATION



COVID 19 POLICY

Holbrook Hall remains alert to the risks of COVID 19 and has a robust regime of infection control whilst our high standards of care enhances our resident's quality of life.

We welcome new permanent or respite residents subject to our strict admission process.

Please contact us on

01332 880698

or email holbrookhall@aol.com



HOLBROOK HALL

QUALITY CARE FOR THE ELDERLY

WWW.HOLBROOKHALL.CO.UK

“

My life
My home
My favourite
chair by the fire

Home care from
Bluebird Care



Find out more about home care and the difference it could make to your life.

Email the Bluebird Care team to find out more about our home care service:
ambervalley@bluebirdcare.co.uk
or call us on 01773 880055

bluebirdcare.co.uk/amber-valley