



# DUFFIELD SCENE

APRIL 2019

**Edition 318**  
**Published Monthly**

## Ellis-Fermor & Negus

SOLICITORS

**Helping People,  
Solving Problems**



BELPER • RIPLEY • BEESTON • LONG EATON

**Belper 01773 821665**

Lexcel

[www.ellis-fermor.co.uk](http://www.ellis-fermor.co.uk)

## PROPOSALS TO BUILD 245 HOUSES ON GREEN BELT

Amber Valley Borough Council (AVBC) are proposing to allow the construction of 245 new houses at two sites in Duffield, building 2,010 extra houses in Amber Valley by 2028. This is to be created by deleting land from the protected green belt.

AVBC has proposed to add 14 extra sites to its Local Plan – a blueprint for future development – by deleting land from the green belt. This was part of the authority's first green belt land review for 30 years. These extra sites are, in part, needed due to



the shortfall in houses which could be completed during the

remaining nine years of the Local Plan – which runs from

2011 to 2028. This could see 1,220 houses built by March 31, 2024 and 2,010 by 2028.

Duffield is to see 245 extra houses added into the plan, on what is currently green belt. These would be split between 175 off Cumberhills Road and 70 off Wirksworth Road, close to Duffield Meadows Primary School.

The proposed changes to the Submission Local Plan, that includes amendments to the existing Green Belt boundary and the allocation of additional Housing Growth Sites / Economic Growth ... continued on page 5.



**BENZ BAVARIAN**  
SERVICE CENTRE



**1987 - 2017**  
**Celebrating 30 years**  
**of Excellence**

The **MOT & Service** centre you can trust

- Bosch Approved Workshop Facility
- Fully Certified MOT Centre
- MOT Preparation
- Full Electronic Diagnostic service
- Re-mapping service, power and MPG
- Free local collection and delivery
- Free Courtesy car
- Save up to 50% on Main Dealers

**01332 843756**

[service@benzbavarian.com](mailto:service@benzbavarian.com)

4 Tamworth Street, Duffield, Derbyshire, DE56 4ER



## CARWISE



**Award-winning service from  
your local garage**

- We hand-pick used cars for choice, quality and value
- We look after all of your motoring needs:
  - Service, repair, MOT, electronic diagnostics;
  - Tyres, air conditioning;
  - Accident repair.



**Call us on 01332 840779 or visit:**

**[www.carwisederby.com](http://www.carwisederby.com)**

*please read our customer feedback*



## DUFFIELD SCENE

Established  
August 1992

All information,  
letters, news,  
articles, diary events,  
photographs and  
suggestions should be

marked "Duffield Scene" and sent to:  
Duffield News, Town Street, Duffield.

Telephone: 01332 898 898

Email: [info@duffieldscene.co.uk](mailto:info@duffieldscene.co.uk)

Web: [www.duffieldscene.co.uk](http://www.duffieldscene.co.uk)

## The Duffield Clinic

Eyes + Ears + Skin

6 Wirksworth Road  
Duffield, Derbyshire DE56 4GH

[team@duffieldclinic.co.uk](mailto:team@duffieldclinic.co.uk)  
[www.duffieldclinic.co.uk](http://www.duffieldclinic.co.uk)

**01332 843666**

### Our services:

- + Eye tests
- + Contact lenses
- + On-site glazing
- + Corporate eyecare/VDU/safety glasses
- + Skin rejuvenation
- + Botox & fillers
- + Podiatry
- + Ear wax suction
- + Audiology/Hearing aids
- + **FREE** Hearing tests

**HOME VISITS**

**EVENING APPOINTMENTS**



## PC-BMI

COMPUTER & MEDIA SERVICES

- PC Repairs & Upgrades
- Apple Mac Repairs & Upgrades
- Business Services & Networking
- New PC's & Laptops
- Virus Protection & Removal
- Software & Tuition
- Backups & Data Recovery
- PC Health Checks
- VHS & Slide to DVD Transfer Service



We visit your home or business

[www.pc-bmi.co.uk](http://www.pc-bmi.co.uk)

Tel: 01332 830888 Mobile: 07894 309024

Finding the right solution for you



## PRIDE

electrical services ltd

FREE ESTIMATES

All aspects of electrical work undertaken including:

- Rewires/partial rewires • extra sockets
- extra lights • new extensions • central heating
- wiring/fault finding • inspection and testing
- landlords certificates • friendly reliable service.



**Jeremy Bexon**

Tel: 01332 660779 Mob: 07921 634473

Email - [admin@prideelectricalservices.co.uk](mailto:admin@prideelectricalservices.co.uk)

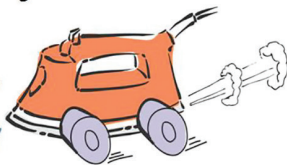
## IRONING

- \* Free Collection/Delivery to All Areas
- \* Fully Insured
- \* 24 Hour Return
- \* **Just £3.80 per KG \***

*Save Time and Stress Call*

***Pressed Express !!***

**Tel : 07535 671244**



## ACCESS LOCKS DERBY LTD

6 Marsden Close, Duffield

Tel: **01332 842852**

Mob: **07737239388**

- Local Family Run Business
- Established 12 Years
- Full Locksmith Service
- Senior Citizens Discount

Website: [locksmithderby.com](http://locksmithderby.com)

Email: [accesslocksderby@aol.com](mailto:accesslocksderby@aol.com)



## Coxbench Hall

Quality Residential Home

Drop in to see us, browse our website or telephone for a brochure and DVD.

**Alfreton Road, Coxbench, Derby DE21 5BB**

- ◆ Superb home cooking, catering for special diets ◆ Extensive entertainment and activities on offer
- ◆ Outings in our own minibus ◆ Beautiful gardens in the National Gardens Scheme
- ◆ Highly trained staff ◆ All rooms have call system, TV and telephone ◆ Most rooms are en-suite
- ◆ Weekly and long stay options available ◆ Free day's stay for potential Residents

Telephone: 01332 880200 Email: [office@coxbench-hall.co.uk](mailto:office@coxbench-hall.co.uk)

Web: [www.coxbench-hall.co.uk](http://www.coxbench-hall.co.uk)

**Coxbench is about caring**

## Van and a Man

**£35.00 FOR THE FIRST HOUR**

**£25.00 FOR SUBSEQUENT HOURS**

**Half Day and Full Day rates available**



**Call Malcolm on 07870 444 461**



# MUSIC AT DUFFIELD - A4 BRASS QUARTET

**A4 Brass Quartet are one of the UK's leading young chamber ensembles. Based at the Royal Northern College of Music in Manchester, A4 Brass is comprised of principal players from some of the UK's leading brass bands, including the world famous Grimethorpe Colliery and Fodens' bands. Concert sponsored by The Tillett Trust.**

## Programme

Bates: Toccata 3  
 Waespi: ISouth Uist Variations  
 Grainger arr. Bates:  
 Molly on the Shore  
 Sato arr. Bates: Tsunangari  
 Goedicke arr. Bates:  
 Concert Etude  
 Scottish Trad. arr. Bates:  
 Banks and Braes  
 Mendelssohn arr. Robertson:  
 Saltarello  
 arr. Bates  
 "Alone at the Opera"  
 including: Pachelbel's Canon;

Locus Iste; Largo Al Factotum;  
 Flower Duet; Faust (finale)  
 This concert is in Saint Alkmund's Church, Duffield, Derbyshire, DE56 4BA. The venue is suitable for the disabled and there is a free car park nearby. Please note that the doors will open at 7.00pm and all seats are unreserved. Individual tickets: Adult £15, Concession £14, Student £7, available at the door and online at [www.musicatduffield.com](http://www.musicatduffield.com).  
 Next concert: Saturday 11 May 2019: Beate Toyka (piano).

A4 Brass Quartet comprises of principal players from some of the UK's top brass bands, including Grimethorpe Colliery, Brighouse & Rastrick and Fodens'. With "technical virtuosity in abundance" (Brass Band World), these four astonishing musicians come together to perform both lyrical and high-octane works,

forming a distinctive and new take on chamber music. The Quartet has a unique blend of instruments, with a cornet, tenor horn, baritone and euphonium creating an exclusive sound that stands out from the standard brass quartet. With this unusual instrumentation, A4 Brass has actively developed their repertoire, commissioning

new music, composing and arranging music themselves. A4 Brass have won numerous prizes and awards including the 2018 Royal Over-Seas League Chamber Music Competition, a Tunnell Trust Award, the Tillett Trust Young Artists' Platform series and the Musicians' Company Concert Series. [www.musicatduffield.com](http://www.musicatduffield.com).



**We can make a difference every day**

Quality care and companionship in your own home

**Companionship  
Personal Care  
Managed Live In**

Choose us to make a difference to you or your loved ones every day by calling 01332 91 32 32  
[www.rightathomeUK.com/Derby](http://www.rightathomeUK.com/Derby)  
[Derby@rightathomeUK.com](mailto:Derby@rightathomeUK.com)

**Hospital to Home  
Specialist Care**

Quality Care in Your Home

CARE AND COMPANIONSHIP
 PHYSICAL ASSISTANCE
 PERSONAL CARE

WELL-BEING
 SPECIALIST CARE
 DEMENTIA

**BIG BRAND DEALS**

**ROBERTS**

For your next LED TV, Washing Machine, Refrigeration and much more besides

Available For Immediate Delivery • Credit Facilities Available  
 The credit advertised is provided by one credit provider with whom we have a commercial relationship

**LESTER & NIX**

We Deliver and Install Locally  
 We Advise and Care  
 We Remove Your Old Appliance

[www.lesterandnix.co.uk](http://www.lesterandnix.co.uk)  
**01773 822828**



**Woofs and Walkies**

Charity dog walk  
and fun day  
Sunday 19th May

Pride Veterinary Centre, Riverside Rd, Derby, DE24 8HX  
[scarsdalevets.com/woofs-walkies](http://scarsdalevets.com/woofs-walkies)

**01332 678333**

Scarsdale Vets  
[scarsdalevets.com](http://scarsdalevets.com)

Pride Place,  
Caesar Street,  
Derby DE1 3RU

24 Hour Call Out

**Pride Plumbing Services**  
[www.prideplumbingservices.co.uk](http://www.prideplumbingservices.co.uk)

- Central Heating
- Boiler Installations
- Boiler Breakdowns & Repairs
- Bathroom Suites
- Taps & Valves
- Servicing & Landlords Certificates
- Unvented Hot Water Units

**All work undertaken and guaranteed**  
Free Quotations

Reg No. 213086 Tel: 01332 367070 Anthony: 07832218516

**WILLIAMSONS ROOFING**

Roof repairs and re-roofs  
Chimney repairs / Leadwork  
Flat roofs etc (no VAT)

Duffield based  
**01332 841488**  
*40 years in business locally*

**NEED A HANDYMAN!!**

DAVID GREY  
PROPERTY MAINTENANCE  
AND REPAIR

**David Grey's Property Maintenance**

*"One Man one bill"*

- Plastering
- Plumbing
- Tiling
- Painting
- Dripping taps
- Minor Electrics
- Carpentry
- Fencing

01332 881 801 07724 500 204

**Professional tuition in maths & English**

- Maths
- English
- Reading
- Spelling
- Science
- Primary to G.C.S.E
- Holiday & Term Time Lessons

Kip McGrath's qualified teachers create individual tutoring programmes using proven Kip McGrath methods

Call Julia on 01773 823633 mobile 07813 625499 for a FREE ASSESSMENT

Kip McGrath Belper  
The Heritage Business Centre  
Derby Road A6  
Belper  
DE56 1SW  
[www.kipmcgrath.co.uk/GB/Derbyshire-Belper.aspx](http://www.kipmcgrath.co.uk/GB/Derbyshire-Belper.aspx)

**Kip McGrath**  
EDUCATION CENTRES

MUM LIKES...  
FAMILY TRIPS OUT  
COOKING ITALIAN FOOD  
LUNCHTIME WITH FRIENDS  
SPA WEEKENDS  
DRIFTY LUNCH AROUND THE BALE  
WALKING THE DOG  
GALAXY HOT CHOCOLATE  
CARD CRAFT  
FOOD BLOGGING  
RETRO HANDBAGS  
RETAIL THERAPY

- CHOOSE YOUR DESIGN
- ADD TEXT AND COLOUR
- PREVIEW INSTANTLY

[www.personalisedposters.co.uk](http://www.personalisedposters.co.uk)

**BRANCH OFF TREE SERVICES**

All aspects of tree work undertaken to **British standards 3998** by fully insured and **NPTC qualified** professional arborists. Also stump grinding (stump removal) carried out.

**Call: 07855 607 203 or 01335 214 137**



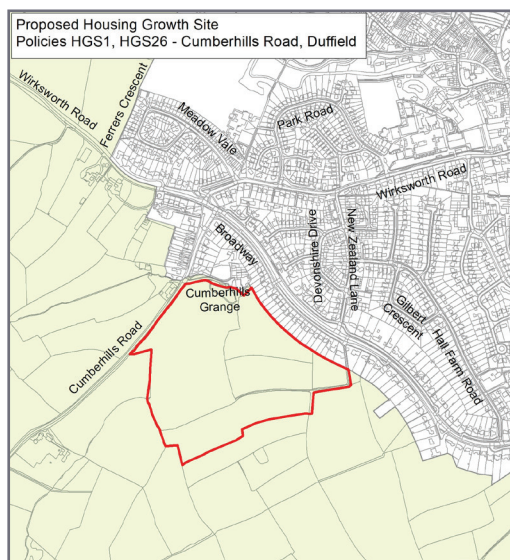
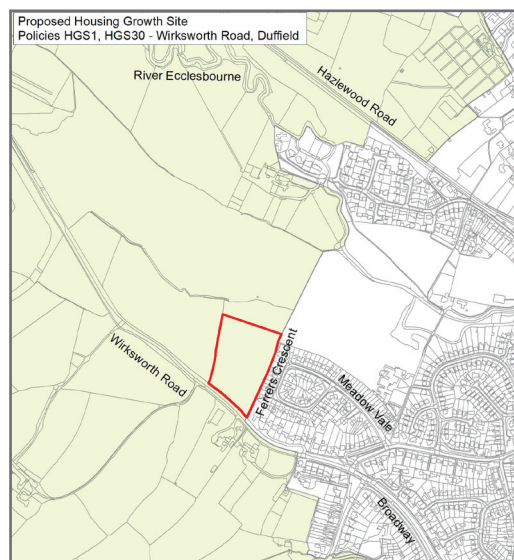
# PROPOSALS TO BUILD 245 HOUSES ON GREEN BELT

## From the cover...

Sites, have been published for public consultation until 4:30pm on Tuesday 30 April 2019 at: [www.ambervalley.gov.uk/planning/planning-policy/local-plan/](http://www.ambervalley.gov.uk/planning/planning-policy/local-plan/). Hard copies of the consultation documents can also be viewed at Duffield Library.

AVBC's local plan policies state that building on countryside and greenbelt will only be allowed where special circumstances are demonstrated, such as a lack of affordable housing in the area. The decision on whether to proceed with green belt declassification will be made on a site by site basis and will be made by the Planning Inspector who is independent of AVBC.

Amber Valley is in a Local Housing Market area that includes Derby City and South Derbyshire. The need for new homes, including



affordable homes are identified through a Strategic Housing Market Assessment (SHMA) which feeds directly into the Councils Local Plan. In order to meet their Local Housing Market area housing quota, the proposal is to declassify the 14 sites as green belt to allow housing developments.

Within days of the plan to

declassify the green belt land becoming public knowledge, a community action group was formed. It is made up of residents from throughout the village, not just people who live next to the sites on Cumberhills and Wirksworth Road; The new group is called "Save Duffield Green Belt" and has a website of the same name –

[www.saveduffieldgreenbelt.com](http://www.saveduffieldgreenbelt.com); The website has full details of how people can have their say on the proposal and has a fund-raising page to pay for professional planning advice. Save Duffield Green Belt believes this potential development would have a significantly detrimental impact on our village.

Nursing Care | Residential Care | Long-term Care | Respite Care | Day Care

**Milford House**

WINNER OF THE DIGNITY BRONZE STANDARD AWARD 2011

**Welcome to Milford House, your local award winning care home**

At Milford House we offer residential and nursing care within the beautiful former country residence of Jedediah Strutt.

You will be assured of 24 hour personalised care service, traditional and delicious home cooked meals by our on-site chef, social activities, housekeeping services, hairdressing, visits by GP, and much more.

**Milford Care**  
Winner of Best Care Group in Central England 2008

**Derbyshire County Council**  
Quality Premium

**MACMILLAN CANCER SUPPORT**  
Life Enhancing Care Home Program

**Great British Care Awards 2011 Winner**

*"All the staff were genuinely concerned for her, and us, which helped us to feel better knowing that we had definitely made the right decision. We could not have been happier with everything that you did for her while she was with you, and also the welcoming we as her family received every time we came to visit her. Nothing was ever too much trouble for anyone."* (Family of resident, February 2012)

[www.milfordcare.co.uk](http://www.milfordcare.co.uk)  
01332 841753

Derby Road, Milford,  
Derbyshire DE56 0QW

**Overwhelmed by Tech?  
Need help to get the most from your devices?**

We offer tutorials in the comfort of your own home, customised to your needs.

- Phone / Tablet and Computer problems
- Slow WiFi & Internet Issues
- Buying Advice, Installation & Setup
- Backup Advice for your files and photos

Call today for a **FREE** Assessment with no obligation  
or visit our website for more information  
[derbyshiretechhelp.com](http://derbyshiretechhelp.com)

**Derbyshire Tech Help**

Andrew King 07494 535993  
[andrew@derbyshiretechhelp.com](mailto:andrew@derbyshiretechhelp.com)

**TRUSTED TRADER**  
DERBYSHIRE County Council  
Improving life for local people



# DBS APPRENTICE WINS REGIONAL RECOGNITION

Duffield Building Services are proud to announce that Jack Edwards, one of their 4 apprentices, has just been awarded Yorkshire and Trent's 'Apprentice of the Year' in the Federation of Master Builders' (FMB) Master Builder Awards 2019 held at a black-tie event in Manchester. As part of the Master Builder Awards, the FMB carries out a nationwide search to find the building industry's best apprentices.

This was a hard-fought category within the FMB and is testament to Jack's outstanding work ethic, along with his skill and attention to detail, producing workmanship way above his years. Jack continued to study past the standard 2 year apprenticeship to differentiate himself from other apprentices and has now completed his level 3 (Joinery) qualification.

Nigel Williams, Director of DBS says 'Jack operates independently like someone who has 10+ years of craft

experience. His range of skills is very impressive for someone who is still only 20. He now routinely constructs timber roofs, creates stud partition walls and joisted floors.

He is valued by all of our other tradesmen to deliver an excellent quality job, and nobody questions whether he is capable to complete a task. He is a very highly valued member of the DBS team.

Apart from his technical skills

Jack epitomises the ethos and standards that makes DBS stand out from the crowd. DBS tries very hard to be respectful, high quality, and to operate with utmost integrity. Indeed, Duffield Building Services were also Highly Commended in the 'Heavenly Builder' category of the awards and we would like to thank our clients for their nominations.

I am proud to say that Jack demonstrates our qualities to

our clients on a daily basis.'

As a regional winner, Jack will now go up against other winning apprentices from around the UK with a chance to claim the coveted national Apprentice 2019 crown, as well as a cash prize of £500 from the FMB. The national ceremony will be held at the Intercontinental Hotel, Park Lane, London on 20th September.

We wish him all the best with this.



**Duffield**  
**CHIROPRACTIC**  
**CLINIC**

- PAIN
- POSTURE
- PERFORMANCE

T. 01332 840750

[duffieldchiropractic.co.uk](http://duffieldchiropractic.co.uk)

First floor, 25 Town Street, Duffield  
Derby DE56 4ER

**Saint Leonard**  
veterinary centre.



- Outstanding Affordable Service
- See Your Own Vet Every Time
- Advanced Veterinary Care
- Family Run Business
- Allestree branch  
2 miles from Duffield  
on Duffield Road



**DERBY & ALLESTREE PRACTICES**

134-136 OSMASTON ROAD, DERBY, DE1 2RF, TEL: 01332 345119  
367A DUFFIELD ROAD, ALLESTREE, DE22 2DN, TEL: 01332 553396

[WWW.SLVETS.CO.UK](http://WWW.SLVETS.CO.UK)



# FROGSPAWN SURVEY & KESTRELS ON THE MEADOW

In the 1400's Chaucer wrote in the Canterbury Tales about a group of pilgrims starting out on a pilgrimage.

*"Whan that Aprill, with his  
shoures soote  
When in April the sweet  
showers fall*

*The droghte of March hath  
perced to the roote  
That pierce March's  
drought to the root and all*

*And bathed every veyne in  
swich licour,  
And bathed every vein in  
liquor that has power  
Of which vertu engendred  
is the flour;"*  
*To generate therein and  
sire the flower,*

As the season begin to warm up and the light increases, it is a time when we humans feel more like going outside – walking, gardening or sitting in the sunshine.

Whilst we wait for the blossom to dazzle us, being observant is key to appreciating wildlife. Sitting having a coffee the other day, one of the tiny wild strawberry plants against the little low wall next to me was rapidly disappearing from view and at the last minute, a small vole showed itself, tugging the last bit out of sight - presumably the entrance to its nest. It reminded me of when I was small.

My sister asked me what was

my earliest memory from childhood. When I was about 4 years old, I tripped and gashed my knee open quite badly on a piece of wire. My mother took me to the local chemist shop and the pharmacist took me into the back room, sat me on a table whilst he swabbed the wound and discussed whether it should be stitched or not. He made reference to using catgut in such cases - gesturing towards the glass jars containing strange tangles of what looked like misshapen string arraigned on a shelf above my head. He decided not to stitch and put a dressing on whilst I mused as to what catgut actually **was** and how you could get it out of a cat!

The second memory that had an **even more lasting impression** was running down a very long garden to the scythed hay piles amongst the apple trees where the smell of the warm grass and the thrill of finding an old skylark's nest amongst some branches in the undergrowth is as clear as the day it happened. I was 6 and we were visiting the

house and garden on Chadfield Road that would become our family home for the next 57 years. It was here I learned to spend quiet time watching birds, insects, plants, voles

and where my love of nature was inspired and nurtured throughout my childhood.

On the meadow it is less easy to see small mammals but you can spot where they have been as they make tracks through the dead grass and occasionally a hole in the ground is evident under a tussock. During the cold weeks of winter, these desperate mammals have rather desultorily nibbled the remaining crab apples scattered in the copses – not the food of choice whilst they wait for the spring.

The hovering kestrel is watching for those small movements in the vegetation and also for the trails of urine that the incontinent field mice, shrews and voles leave as they run. Kestrels' eyes can see ultra violet light and unfortunately for creatures - rodent urine glows ultra violet in sunshine.



The Reserve has benefitted from a six-month bird survey conducted by Emma from Ecclesbourne School as part of her Duke of Edinburgh silver award. As she walked the meadows the kestrel followed her around – no doubt the bird was hoping she would disturb something for it to eat. One of her highlights was seeing a Kingfisher catching a fish – something of which I am very jealous! She will be presenting her findings to the Recreation Committee of the Parish Council on the 20th March.

Our informal frogspawn survey across the village revealed the first sighting in a garden pond off Holloway Road on February 23rd (similar to in February 2016 when it was also surprisingly warm) - and subsequently right across the village. That will be a date marker for the next years. It shows that even small garden ponds are excellent contributors to providing habitat for our native amphibians. The water in the wetland ponds on the meadow presents a bigger surface area and is much deeper so it takes longer to warm up - the frogs and toads are delayed in coming out of hibernation and are only just starting.

Since the start of the twentieth century, almost 1.6 million hectares of wildflower meadows have been lost. The knock-on effect to wildlife and plants is devastating; 72 per cent of our butterflies have disappeared in the last decade alone. Thank you for helping to mitigate this danger by supporting the Nature reserve and for your own efforts in your gardens and allotments. Our first cowslip appeared on Feb. 15th. Enjoy the spring blossom.

by **Di Hancock**  
Millenium Meadow Chair  
07511230320  
di.2013.hancock@gmail.com.





# CAN YOU HELP PEOPLE WITH DISABILITIES?



I have written this article to highlight an “*amazing charity*” that offers a “*wonderful service*” to anybody suffering from a disability of any kind who needs the use of an aid “when an off the shelf piece of equipment does not fit the bill”. These are the sentiments posted by occupational therapists in recognition of the work done by the local Remap group.

Remap is a National Charity comprising of around 70 regional groups. Duffield's local group is the Derby, Burton & District Panel.

We currently have just over a dozen regular volunteers who come to our monthly meetings, where we consider the problems for which people are requesting help. We have up to 150 referrals per year, which means that each of us can expect to take on a project to help somebody every month.

I attended my first meeting one year ago, having recently retired and deciding that I would like to give some of my free time to charity. As with many ‘typical blokes’, I am reasonably competent at home DIY, (I hope my wife doesn't

read this article!) and like a bit of a challenge. I had never heard of Remap until I was at a quiz night at the Squash Club when one of our team told me about a wooden ramp he was making for someone who uses a wheelchair. It sounded interesting and so I asked if I could go along to the next meeting with him.

I had serious reservations before that first meeting; I had no knowledge or experience of working with disabled people and as most of the volunteers came from engineering backgrounds, I feared that I would be out of my depth making gadgets or modifying aids.

I am glad I went. Many problems don't involve complicated solutions; For example what is this? Answer at the end of the article.

My first project was to make a wooden handle with a Velcro foot strap to help someone to lift their ‘dead-leg’ onto their wheelchair. It was very satisfying to think of something simple that was relatively easy to produce. (I asked a local company to help me with the foot strap - we have a directory of such companies prepared to

help with particular skills or materials). It was immensely rewarding to see the client making use of it and knowing that it offered them more independence.

There are often more referrals sent in than there are Remappers to help. We could do with a few more volunteers, either ‘male blokes’ or ‘female blokes’ – people who like making things; see below for contact details.

Equally, if you think that Remap might be able to help you or somebody that you know, please send in a referral. Most of our referrals come via occupational therapists but anyone, individual or carer can contact Remap directly. To make a referral you should complete a referral form and send it by email or post to our Chairman. Forms are available via our website [www.derbyremap.info](http://www.derbyremap.info) - click on the ‘Seek Help’ option at the top of the Home page and the form can be accessed and downloaded.

We are also happy to give talks to groups. If you are interested in a presentation about the work that Remap does please contact me via my email address – see below. The talks usually take about 40 minutes and are free, although a donation towards our running costs, which is currently about £6000 per year, is always appreciated.

So, did you guess what the bent knitting needle can be



used for? It helps people with arthritis wring out their wet dishcloths and flannels. Another favourite of mine is the bonded peg(s) for hanging out washing with one hand; one peg picks up the item, the other clips on the line.

- Further information or referral forms can be found on our website at [www.derbyremap.info](http://www.derbyremap.info).
- Volunteering to help - contact our chairman; Allan Sutton, Tel 07715 377794. Email; [remapderby@broadway53.plus.com](mailto:remapderby@broadway53.plus.com).
- Donations should be sent to our treasurer; Dave Nappin, 38 Chestnut Close, Duffield, Belper, Derbyshire DE56 4HD. Email; [dnapp1@aol.com](mailto:dnapp1@aol.com).

We look forward to hearing from you.

**Nich Holberton,**  
[nicholas.holberton@gmail.com](mailto:nicholas.holberton@gmail.com)  
Remap talks organiser

## ECCLESBOURNE VALLEY RAILWAY EASTER EVENT

**Ecclesbourne Valley Railway Easter Event on Friday 19th, Saturday 20th, Sunday 21st and Monday 22nd April including Party Workshops Family Circus at Wirksworth Station.**

Ever fancied trying your hand at circus tricks? Returning to Wirksworth Station is the excellent Family Circus where there's juggling, spinning plates, wire walking and much much more! They'll teach you how to do it!

There will be amazing fire performances at regular intervals throughout the day (sorry, you can't try that bit!).

You can take part for free if you have a Wirksworth and Duffield line Day Rover ticket it is just £2.00 for those just wishing to pop along and join in the fun!

### Easter Egg Hunt

Our popular Easter Egg Hunt will be taking place around the station.

### What's happening?

Steam and heritage diesel trains between Wirksworth and Duffield are running to the Yellow Star Timetable. Steam trains are running on the fearsome 1 in 27 incline to Ravenstor at intervals through the afternoon (small supplement applies).

Party Workshops Family Circus at Wirksworth Station (Sat, Sun and Mon).

Easter Egg Hunt around Wirksworth Station (Fri, Sat, Sun, Mon).

### Fares

Wirksworth and Duffield  
Adults £14.50  
Concessions £13.50  
Children £7.50  
Family (2+3) £38.50  
Ravenstor Supplement  
Adults £3.00  
Children /Concessions £2.00  
Trains depart Duffield by diesel at 10:20 and steam at 12:10, 14:10 and 16:10.  
[www.e-v-r.com](http://www.e-v-r.com).



L&Y Locomotive 52322 will be making a debut this Easter



## DUFFIELD WIN DERBYSHIRE TENNIS CLUB OF THE YEAR

**Duffield Tennis Club had a triumphant night at the Derbyshire Tennis Association awards evening. The Club received the Club of the Year accolade for the third time in four years, after a fantastic summer season for its ladies' teams, as well as winning the county knock out mixed competition for the Lawson Wood Cup.**

Ladies' team members collected a host of trophies at the event at Pride Park, with Ladies' 1 topping Division 1, Ladies' 3 winning Division 2, and Ladies' 4 winning Division 3. Ladies' 2 finished mid table in Division 1 and Ladies' 5 were runners up in Division 4.

In the Mixed league, Duffield 2 also won Division 2. The Men's 1st team were 3rd in

Division 1 with most other men's teams finishing mid table.

Along with the adult success the junior teams also won 4 summer League divisions and 2 winter divisions plus the club has 20 juniors accessing County training and 8 juniors representing Derbyshire in County Cup competitions.

But it wasn't just about the success of the teams. Oli Storr was voted Coaching Assistant of the Year, while 14-year-old Issy Knighton was Young Volunteer of the Year. Both help to support the busy junior programme organised by Head Coach James Grindell. Duffield regularly hosts the County Championships in August, and will be doing so again this year.



## DUFFIELD CRICKET LOOK FORWARD TO 2019 SEASON

**After a very busy 2018 season with much effort being focused on the construction of the new White Peak Pavilion Duffield CC looks forward to the first full season using our new facility.**

We will be running four Saturday teams this year and a full junior programme so there will be plenty of Cricket to enjoy for players and spectators alike.

As a club we very much welcome community involvement so please feel to come down and enjoying the beautiful setting and with the installation of the lift to the first floor bar area now complete, the club is now fully accessible.

The new pavilion is available to hire for community groups,

children's parties, adult parties and other regular or one off events. To register an interest please contact as at [DCCwhitepeakpavilion@gmail.com](mailto:DCCwhitepeakpavilion@gmail.com).

We are also very excited to announce that The King's Head have agreed to be our new shirt sponsors. We are delighted to be associated with Ryan and his team and really appreciated their commitment to enhancing village life.

Our thriving junior section continues to provide lots of opportunities for boys and girls to get involved in cricket. The junior programme will be running seven days a week at Eyes Meadow during the summer, and we welcome players of all abilities.

This includes the very popular All Stars programme, which is a great introduction to cricket, and lots of fun, for those in school years 1-3. Duffield has been the biggest All Stars centre in the East Midlands for the last two years, and this summer we'll be running two 8-week programmes. One will be on Friday evenings from 6-7pm, starting May 10, and another will run at the same time on Tuesdays from May 14. There is a limit on the number of places available, and the Friday programme in particular is filling-up quickly, so anybody interested should register early at: <https://ecb.clubspark.uk/AllStars/At/duffield>. For older children our Kwik cricket programme is

ideal for those in years 4-6, who are either progressing from All Stars or who are new to cricket. Kwik training is on Saturday mornings from 10.00-11.30am, and starts on May 4. We also have hard-ball squads playing in local leagues for players from Under-11 right through to Under 19. Anybody interested in finding out more about our junior programme should get in touch with us.

Please send any enquiries regarding junior, senior or social membership via email to [membership@duffieldcricket.club](mailto:membership@duffieldcricket.club) or check out our social membership website at <https://duffieldcricket.club>.

Here's to a great summer and let's hope the sun shines like 2018!





# DUFFIELD AND DISTRICT HERITAGE FEATURES - FIELDS



It's amazing to think that during the medieval period the development of the humble ploughshare helped transform the landscape around Duffield; still readily visible today. From about the 9thC until the 17thC the growing of crops and the keeping of domesticated animals was carried out within the **Open Field System** of agriculture. This normally comprised two or three large fields, each of several hundred acres, surrounding the manor of the feudal lord. In Duffield's case these lords' included the Anglo/Saxon Siward Barn, the Norman De Ferrers and eventually the Duchy of Lancaster. This system dragged on in parts of Europe until relatively recently, and even today it's continued in the village of Laxton in Nottinghamshire. What is clear from the great **Domesday Survey** of landholdings in 1086 is that Duffield was already an established community using this **common land** method of subsistence farming.

Open fields were divided into strips that would traditionally be a **furlong** (a 'furrow-long'), 220 yards (about 200 metres), and from about 5 yards (4.6 m)

up to a **chain** (22 yards, about 20 metres) in width. One furlong by one chain comprised one acre. These strips, known as **selions**, were cultivated by tenants from the peasantry (some strips on behalf of the lord).

This border illustration from the Luttrell **Psalter** shows heavy ploughing with docile **oxen** (an ox being a castrated male cow). A team could plough about one acre (0.4 ha) a day. The Psalter, now in the British Museum, is an illuminated manuscript created c.1320-1340 in Lincolnshire and takes its name from its patron, Sir Geoffrey Luttrell. It's basically a religious text, best known for its wild profusion of hybrid creatures and hundreds of illuminations; many containing remarkable scenes of daily life in 14thC rural England.

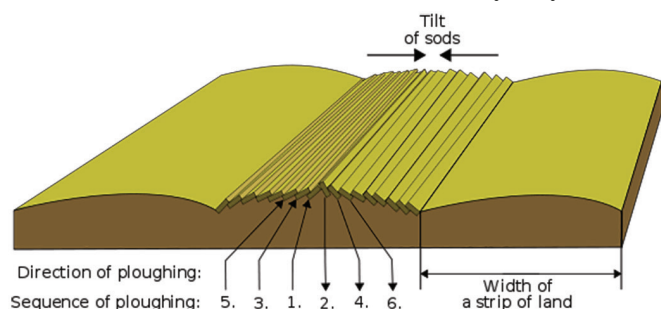
As shown in the illustration, unlike today's advanced ploughs, these were equipped with a simple asymmetric **mouldboard** (a board designed to turn the sods). This produced a deep furrow and turned the earth after being cut by the **coulter** and scooped up by the **share**. This basic non-reversible plough was mainly used in heavy clay areas but

only lifted the soil to the same side of each furrow; normally to the right. Consequently, the constant ploughing in a circular motion from the outside of the strip to the centre resulted in a gradual build-up of soil, as in this section through the ridge.

Ridges were parallel, of varying width and up to 24 inches (61 cm) high and were effective in aiding the drainage of land. They may also have been adopted because the build-up of soil increased the surface area of the holding; advantageous in a subsistence economy where every bit of land mattered.

Over the centuries this method of ploughing produced the

familiar corrugated like '**ridge and furrow**' (**rig** in Scotland); many examples of which almost completely surround the village and extend to Kedleston. These patterns are particularly evident on land undisturbed by arable planting and used for permanent grazing. They are clearly visible when the sun is low which creates shadows, and especially obvious during snow-melt. They're particularly noticeable as an additional 'obstacle' for the golfers throughout the Chevin golf course; seen here from Golf Lane and Cumberhills. The ridge and furrow at Flaxholme is highlighted by the low winter's sun.







Prominent strip field patterns are visible surrounding Moscow Farm and to the west of Cumberhills Road where continuous grazing has avoided major disturbance. The perceived inefficiencies of the open field system, and the shift from arable to livestock production to help feed the



growing population, accelerated the **enclosure** of land; by 1791 in Duffield's case. Though unpopular with the peasantry, by the early 20thC, after more than 5,000 Acts of Enclosure over several centuries, private land management was practically complete. This change from grain to grazing effectively fossilised this ancient landscape.

Interestingly, a new technique for discovering the existence of archaeological evidence, utilises aerial technology known as **LiDAR**; acronym for **Light Imaging Detection And Ranging**. LiDAR is a remote sensing technology using the pulse from a laser to collect measurements that create **3D** models and maps of objects and environments. It's been around since the 1960's, when laser scanners were mounted on planes. However, it wasn't until the late 1980's, with the introduction of commercially viable Global Positioning Systems (GPS) that LiDAR data became a useful tool for providing accurate geospatial measurements. This is illustrated

by the aerial photo showing the extensive pattern of strip fields to the east of the A6 Derby Road/ Broadway junction.

Prior to the stationary steam driven plough, or tractor, (which resulted in straight furrows) the need to turn the ox and plough between furrows at the **headland** (a bank caused where soil dropped from the plough) resulted in the familiar '**inverted S**' pattern; still evident even within enclosed fields. Three curved enclosing hedgerows, overlaying ridge and furrow almost ploughed out of existence, can be seen from the Chevin.

Not far from Duffield some of the most dramatic ridge and furrow landscapes surround the villages of Tissington, Brassington and Carsington. So, wherever you happen to see them cast your mind back to their origins and think about the **Ploughman's Prayer**:-

'The King he governs all,  
The Parson he prays for all,  
The Lawyer he pleads for all,  
The Ploughman he pays for all,  
and feeds all'.  
by **Robert Reid**







*Hunters*

*Java Bedroom  
Collection*

Visit our showrooms at  
Babington Lane, Derby. DE1 1SY  
t. 01332 349285  
huntersfurniture.co.uk  
Facebook, Twitter & Instagram  
@huntersofderby

Living | Dining | Kitchens | Bedroom  
Accessories | Flooring | Café

# DUFFIELD WINDOW CLEANERS



- Experienced, professional and trustworthy
- No job too small
- Fully insured
- Gutter clearance



*Please call for a no obligation quotation*

Contact: Neil Chambers  
Mobile: 07971 122116  
Email: duffieldwindowcleaners@googlemail.com

**'LOCAL SERVICE FROM LOCAL PEOPLE'**

**DUFFIELD WINDOW CLEANERS**, 30 New Zealand Lane, Duffield, DE56 4BZ





## Duffield Parish Council

# Newsletter April 2019

### Events at Eyes Meadow



2019 will see Eyes Meadow busier than ever with lots to look forward to. As well as the ever-popular Duffield Carnival on the 29th June, the Meadow will play host to a number of exciting events:

- There will be two open-air cinema screenings organised by Quad - Bohemian Rhapsody on Friday 13 September 2019 and Grease on Saturday 14 September 2019;
- The circus will be visiting Eyes Meadow in August – date to be confirmed;
- Jonathan Leach, the organiser of Duffield Arts Festival, is organising a Food Fair to take place during the summer months;
- The Parish Council's annual Fireworks Display will take place on Friday 1st November.

### Elections

There will be an election on May 2nd for the seats on both the Parish and Borough Council.

### New Assistant Clerk

Sarah Brooksby has been appointed to the post of Assistant Clerk. Sarah, who lives in the village, starts work in April.



### Work to improve exterior of Parish Council Changing Rooms at Eyes Meadow

Work to revamp the exterior spaces of Duffield Parish Council's changing rooms, including a new seating area, will begin on the 6th May and is expected to take around three weeks. Please bear with us while the work is taking place, it will lead to a much improved space for all to enjoy.



### Commonwealth War Grave Plaque

A plaque is now on display on the gates to Duffield Cemetery to mark the nine Commonwealth War graves of local men who died in the World Wars. Four graves can be found in the Cemetery from WWI and five from WWII.

Parish Council meetings are open to the public to attend to listen or address the Council on any Parish issues. Correspondence from Parishioners is also reported to the meetings.

The next Parish Council **Full Council Meeting** and the **Annual Parish Meeting** will take place on **Wednesday 10th April** at the Weston Centre. The Annual Parish Meeting will take place at 7pm and the Full Council Meeting will take place immediately afterwards. All are welcome to attend.

Agendas, Committee Reports and Minutes can be viewed on line at

**[www.duffieldparishcouncil.gov.uk](http://www.duffieldparishcouncil.gov.uk)**

#### Contacts

##### The Parish Office

The Weston Centre, Tamworth Street, Duffield, DE56 4ER.  
Opening hours for public enquiries 10:30am - 12:30pm Tuesdays and Thursdays.  
Telephone 01332 842740. Email - [clerk@duffieldparishcouncil.gov.uk](mailto:clerk@duffieldparishcouncil.gov.uk)

##### The Cemetery

43 Hazelwood Road, Duffield.  
For all Cemetery enquiries please email or telephone the Clerk  
on the number above or 07595 515154.

##### Borough Councillors

Chris Short - 01332 843781 and Steven Evanson - 01332 842333

##### County Councillor

Chris Short - 01332 843781. Email - [chris.short@derbyshire.gov.uk](mailto:chris.short@derbyshire.gov.uk)



@DuffieldParCoun



Duffield Parish Council



[www.duffieldparishcouncil.gov.uk](http://www.duffieldparishcouncil.gov.uk)



# UNDERWOOD VINECOMBE

## SOLICITORS



### Residential Property

We are a friendly team, dedicated to providing a highly responsive service for the sale and purchase of all types of residential property.

Whatever the nature of the transaction, we ensure that our clients are informed throughout and that the process is completed as conveniently and as quickly as possible. The firm has been awarded a national accreditation under the Law Society's Conveyancing Quality Scheme.

## Services



**Sale and Purchase**



**Gifts**



**Deeds of Trust**



**Equity Transfers**



**Re-mortgaging**



**Lettings**

*Thanks so much! You made the move so much easier!*

ND & SD, Willington



To find out how we can help you, please call us on:

**01332 836666** or visit [www.uvlegal.co.uk](http://www.uvlegal.co.uk)

Telford House, Outrams Wharf, Little Eaton, Derby, DE21 5EL



## WEEKLY EVENTS

**MON**

**Babies and Bouncers\***  
10.00am - Parish Hall

**Rotary Club of Belper & Duffield**  
6.30pm for 7.00pm, The Lion Hotel,  
Belper. John Horwood 01773 853813

**TUE**

**Traditional Prayer Service**  
9.15am - St Alkmunds Church

**Seedlings Toddler Group\***  
9.30am - 11.30am  
Emmanuel Community Church

**Boys Brigade & Girls Association\***  
6.15 - 7.30pm, New members welcome.  
£2.00. Ages 5-11. Baptist Church Hall.  
01773 689983

**CHAT (Come and Have Afternoon Tea)**  
Baptist Church 2.00 - 4.00pm. Various  
activities for all age groups. Come and  
join us for tea and a chat! Keith Powney  
841736. No Meetings on 16th and 23rd.

**Yoga Class**  
1pm - 2.15pm, £4.50.  
Bring a mat and a blanket.  
Julie 07817147167 or 01332 841661.  
Methodist Church Hall, King Street

**WED**

**Duffield Baby & Toddler Group\***  
10.00-11.30am  
£3 per child & £1.50 for under 1s.  
Methodist Church Hall, King Street

**Bingo, Tea & Biscuits**  
2.00pm, Good Company.  
Ecclesbourne Close Community Centre.

**FRI**

**Duffield Singers**  
7.45 - 9.45pm  
St. Margaret's Church, Hall Farm Road.

**Twistin' Tots\***  
10.00-11.00am  
Music and movement for under 5s.  
Methodist Church Hall, King Street  
07988 602570 www.twistintots.co.uk

**Massive\***  
4.00 - 6.30pm (years 7-9)  
7.00 - 9.30pm (years 10-13)  
Emmanuel Community Church  
No entry charge. Food & tuck for sale.

**MON-  
FRI**

**Coffee Morning**  
10.00am - 12noon  
The Weston Centre. Coffee, tea and  
biscuits 50p, (refill 20p). Volunteers will  
ensure you are made welcome.

\*term time only

## MONTHLY CALENDAR APRIL

- 3 Computer Self-help Group**  
Methodist Church Hall, King Street 7.30pm  
Mick Hardwick at mick@hardwickclan.co.uk.  
**Appletree Carers' Forum**  
Duffield Surgery. 1.00 - 2.30pm.  
**DCA AGM**  
The Weston Centre, Tamworth Street. 7.30pm.  
Open to all Duffield residents.
- 7 Messy Church** - 10.30 - 11.15 Methodist  
Church Hall. Craft, Bible stories and lots of fun.  
**"Modern Idols"** - 6.30pm in St Alkmunds
- 9 Duffield Cumberhills WI** - Lady Fenton: "On  
With The Show". 7.30pm in the Sixth Form  
Centre, Ecclesbourne School, Park Road. Visitors  
welcome call 840947 for more information.
- 10 Public Meeting - The Future of RJ Weston  
Charity** - 7pm. The Trustees of the Weston Centre  
are proposing to transfer trustee rights to Duffield  
Parish Council. Weston Centre, Duffield.
- 13 'Who Let the Dads Out'** - Quality time for Dads  
with children 5 and under.  
Toys, crafts, stories, games, bacon butties, coffee, etc.  
9.00am - 10.30am at the Baptist Church. £2.00.  
**Music at Duffield** - See page 3.
- 15 Chevin Probus Club** - Lion Hotel, Belper.  
10.00am for 10.45 : Jane Barnes on "Farmer  
Barnes Dairy", followed by lunch in the bar.  
Further info from Peter on 705554.  
**Tea, Cake & Chat** - Parish Church Hall from  
2.00pm. Come for friendship & refreshments.
- 16 Duffield Afternoon WI**  
1.30 - 3.30pm at St. Margaret's Church, Hall Farm  
Road, DE56 4FS. There Will Never Be, Never Be  
Another You". For more information call Chris Jordan  
on 882442, or email chrisinaddis@yahoo.co.uk.  
**Duffield Evening WI**  
Comedienne Pat Hall: "Life Can be Funny".  
7.15 for 7.30pm at St Margaret's Church, Hall  
Farm Road. New members welcome.  
**Local Area Coordinator Nicky Mount**  
10.00am-noon, every third Tuesday. Drop in  
session at the Western Centre.
- 20 Easter Concert** - St. Alkmunds Church 7.30pm  
with Emma and James Rollin and Mike Swan.
- 24 Heritage Walk (Duffield South)**  
6.30pm. - 8.30pm. Join Robert and Hancock in  
a low-key ramble to discover Duffield's southern  
heritage from the ancient parish church of St  
Alkmund to the centre of the village.  
£5 per person (children under 12 free).  
Limited places! 07511230320.
- 25 Community Lunch** - 12.30pm  
Emmanuel Community Church.  
Transport is available - to book, call Lynda on  
840821. All welcome. No charge.  
**Mid-Week Praise** - 1.30 - 2.30pm  
Emmanuel Community Church. Transport can be  
provided - call the ECC Church office on 841386.



# VACANCY:

## GROUP SCOUT LEADER

### Voluntary Management Position

Are you looking for an interesting challenge?  
Do you have good leadership and management skills?  
Are you enthusiastic and organised?  
Want to make a real difference in your community?

**Then you might just be what we are looking for!** Duffield Scout Group are looking someone to become a central part of our team. The GSL role is fundamental to our organisation providing support and leadership to a strong team of adult volunteers within Beaver, Cub & Scout Sections. The role is supported by an Executive Committee who are looking for applicants who can provide direction, build a strong team and achieve results.

### Key responsibilities

- Building and maintaining a team of appropriate adults ensuring they work effectively together and with others to meet local Scouting needs
- Providing the team with adequate support including induction, reviews and development
- Ensuring that there is a challenging, exciting and balanced scouting programme for the Beaver, Cubs & Scouts
- Resolve problems that might occur within the Group
- Work with the Executive Committee to ensure the Group has the best systems /processes in place to support the volunteer adult leaders and develop the Group

### Key skills required

- ♦ Management experience
- ♦ Provide inspirational leadership to the Group
- ♦ Interest in the local Community and voluntary sector
- ♦ Involvement in the Scout organisation (not essential)
- ♦ Strong teamwork and influencing skills
- ♦ Confident and persuasive communicator
- ♦ Enthusiastic approach

### Supportive Network

Both the Group Executive Committee and the District team are on hand for support and advice. An official induction and training are provided and training can be accessed whilst in role.

The role is home based and would involve some but limited travel.

### Interested?

To discuss the role or apply, simply contact the current Group Scout Leader

**Alan Hudson - Email: [alan@hudsonsafety.co.uk](mailto:alan@hudsonsafety.co.uk)**

**Closing date for applications 31st May 2019**

**SCOUTING IS ABOUT  
FUN, TEAMWORK  
AND ADVENTURE.**





# DUFFIELD LIBRARY NEWS FOR APRIL

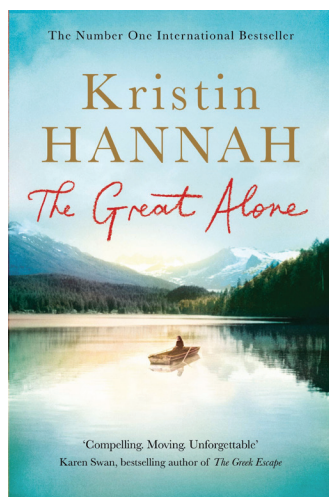
**Please note we will be closed on Good Friday and Easter Monday. We will be open as normal on Saturday 20 April for our normal Saturday hours.**

The library continues to be a donation point for the **Hope for Belper** charity, a local volunteer run food-bank helping our neighbours in Belper and surrounding areas. We have a food crate in the library where non-perishable food can be donated.

The craft group continue to meet on **Mondays** at 10am for a couple of hours to work on craft projects, so please come along if you are interested.

Our usual storytime sessions continue on Fridays at the usual time of 11am for half an hour of stories and simple crafts for pre-school children and their carers. Just call in, no pre-booking is required. Steve is continuing our monthly craft sessions on Saturday mornings, this month

our session will be on 6 April at 10.30am with crafts on a theme of Easter. As before, these are drop in and suitable for families. As 2019 marks the ninetieth anniversary of Faber and Faber publishers we are joining in with their celebrations and displaying some of their books. Please call in to have a look and all books in the displays are available to take out. There are quizzes and puzzles to complete too. Jessie's foyer display is centred



on International Women's Day as we highlight inspirational women. We have included titles such as Shirley by Charlotte Bronte, Bloody Brilliant Women by Cathy Newman and Woman of the World, The Rise of the Female Diplomat by Helen McCarthy in the display I have been reading The Great Alone by Kristin Hannah this month. As I really loved her previous novel, The Nightingale, I was looking forward to reading her latest novel. This story is narrated by Leni, who moves with her mother and father to untamed and unpredictable Alaska during the 1970s. A story of a family in crisis this is an epic story of human survival and love while at the same time is an intimate portrait of a family tested beyond endurance in the harsh but beautiful wilderness. This novel gripped me from the outset and did not disappoint. New Books this month for the library include The Derbyshire

Cookbook, Second Helping, a celebration of the amazing food and drink on our doorstep and featuring over 30 stunning recipes from local eateries. Sight by Jessie Greengrass is a debut novel where the narrator recounts her progress to motherhood, while remembering the death of her mother ten years before. Woven among the personal reflections are significant events in medical history. Described as being beautifully written and fiercely intelligent this novel is sure to be a success. It has been shortlisted for the Women's prize for fiction in 2018. We have also received some new copies of old classics, A Passage to India by EM Forster, The Turn of the Screw by Henry James and The Romance of the Forest by Ann Radcliffe are among them. Well worth reading.

Happy Reading  
**Carole-Ann and the Team**



snake lane design

Graphic Design

Printing

Photography

Web Design

[www.snakelane.co.uk](http://www.snakelane.co.uk)

01332 840 880  
[info@snakelane.co.uk](mailto:info@snakelane.co.uk)

7 Market Place, Cathedral Quarter, Derby DE1 3QE

## The Future of RJ Weston Charity



**PUBLIC MEETING**  
Wednesday 10 April 2019

Duffield Parish Council

**The Trustees of the Weston Centre are proposing to transfer trustee rights to Duffield Parish Council**

To hear why and give your views on this please attend the Annual Parish Meeting at 7pm on Wednesday 10 April 2019



# FLOATING MY PROPERTY INVESTMENT

Our clients become landlords for various reasons – a conscious decision, an inheritance or sometimes unique reasons such as one lady who decided that her home in Belper, wasn't for her. She decided to return to the waterways (which she previously loved) and bought her new home which measures just six feet wide, with ceilings low enough to paint without a step ladder! I caught up with Jane over a cup of tea brewed on her wood stove in her cosy lounge. She had just returned to her permanent mooring near Shardlow, after a morning's adventure on the waterway. Here is Jane's story:

"Isn't it cold living on a boat in the winter?" everyone asks as the first question when they find out your home is a floating one, rather than conventional bricks and mortar. I'd love to open the snapshot of their minds, the one that shows the cold, murky, dark interior. Green mildew up the walls and me shivering as the gales blow in from the East.

Contrast that with my nice snug space, which actually got so hot the other evening the thermometer peaked at 38 degrees C even with the stable doors open, so I decided it was too early to put the diesel stove on and resorted back to the small electric radiator as my sole source of heating (yes it's a lot cheaper than running a four bedroom house!). In answer to all your concerns, it really isn't cold on a boat in winter. We are the only ones you will see in January with the stove on full and the windows all open because we are too hot!

I have recently given up land again, sold all my furniture, rented out my house, with the help of Mary at Derbyshire Relocations, and bought my third narrowboat to move back on to the waterway again. I say 'again' because I will be



starting approximately my fourteenth year on board.

I am not from a boating family and before I bought my first floating home, had never set foot on anything on water other than a Townsend Thoresen ferry to France (which I hated incidentally as I have a phobia of vomiting). I was living in London at the time and was tired of renting flats with other people, dreading hearing the key being put in the lock to signal them arriving home with their boyfriend or work mates. I blame the 'Friends' series for making flat share look appealing. It really wasn't.

I started hanging out with some guys who lived below the radar in St Katherine's Dock and the more I looked, the more I liked the lifestyle. In those days (mid 1990's) it wasn't trendy and was only really done by a hard-core element of rainbow jumper wearing hippie types. I bucked the trend as someone put it, by saying I looked 'remarkably well turned out' emerging from a boat'.

My first boat was bought from an actor who I ended up dating for several years. The boat was as quirky as he was. Forty-three-foot-long and mostly stuck together with silicon sealant and 'no more nails', my Dad repainted her for me in red and green. She was my pride and joy, and I

still say that buying that boat was one of the best things I ever did in my life. It brought me more happiness than anything and despite having a fierce forward gear that made it totally unpredictable when you were pulling into a lock, and tiny wooden windows that swelled in the rain, I was blissfully happy.

Fast forward to 2018 and I once more yearned for the water under my feet. After a holiday on the Norfolk Broads I simply 'knew' where my heart lay.

I am now the proud owner of a fifty-foot narrowboat once again. Prices have gone up enormously - there are a lot more people boating, both living aboard and leisure boaters, but facilities along the canals are so much better and marinas, like the one I am now moored in, are like holiday villages.

My home now rocks again under my feet as I walk the length of my home. I can hear and feel the weather as it buffets me. The wind literally moves my home from whichever direction it is blowing and I lie and listen to the rain on the roof as it pitters and patters from the dark sky.

I know all my neighbours and only have to poke my head out of my boat to say hello or drop down to the laundry to be able to chat. Someone will always have the kettle on if you fancy

a natter or I can walk round to one of the cafes for a coffee. I have lost the isolation I felt in my house, on my new estate, in my sealed little box. This is what I missed, and this is why I did it.

It's not for everyone. I have to fill my water with a hose pipe, to keep my tank topped up, even when it's raining. Who would have thought that Crocs, which are such a hideous shoe, could be so useful to slip on to pop to the bins and the laundry? I actually have two pairs in purple and yellow, heaven forbid...

And poo... the favourite question when people really settle down over that cup of coffee, loose their inhibitions and finally ask the question they really want to ask... 'Where does all your poo go?!'

Well.... Some people have a tank and it goes in there then they get it all sucked out by a big sucky out pipe thing. Other people (me included) have a cassette under their toilet and once a week we put it on a little trolley, wheel it to a nice clean stainless-steel hole with a flush thing on it, take a lid off, tip it up and then watch all our poop and stuff come sliding out and down the hole. So, there you go. We've talked poo now. And I still love my floating home."

You may not have such a drastic reason for wishing to rent out a property. However, we can help you decide whether to use the potential rental income of your property to fund something a bit different and explore more of life. If you would like to learn more about what your home may be worth as a source of income, just get in touch for a free rental valuation and a quotation for a tenant-find or full property management service.

Derbyshire Relocations  
07941 583804 hello@derbyshirerelocationsonline.co.uk.



# CHEVIN CELEBRATE 125 YEARS OF GOLF



## **This year Chevin Golf Club is celebrating their 125th anniversary.**

Chevin Golf Club was established in 1894 as 9 Hole course designed by William Lowe, professional to Buxton and High Peak Golf Club.

The course was first conceived at a meeting at Court House Farm (now a private residence) on 26th July 1894 and was formally opened on October 13th 1894 by professionals James Braid and Tom Williamson. Court House Farm was formerly the old Court which housed a lock up where prisoners were kept until their demise close to the 13th Hole, aptly named "THE GIBBET"

The clubs existing course of 18 holes, both parkland and moorland terrain has magnificent 5 county views from the Chevin Ridge. Histories surround the site, and include Paleolithic to Bronze and Iron Age people and later Roman Legionnaires.

The first Ladies Committee started in 1908 and led by founder member, Mrs. Katherine Sayer, a redoubtable lady who was a stickler on the etiquette of the game. During the following years of mixed golf, another legend in our lifetime emerged in the form

of the Hon Joan Gee, a "much admired" golfer nationwide and who became Champion of England 1951.

In 2007 Chevin member Melissa Reid turned professional, after winning the "Amateur Salver" at the women's British Open at St Andrews and was mentored for a year by Sir Clive Woodward. She has gone on to win 6 times on the Ladies European Tour and represented GB&I twice in the Solheim Cup Team and previously in the Curtis Cup Team whilst playing as an amateur.

She now plays on the LPGA Tour in the USA as well.

Captain Dave Dawson and Ladies Captain Chris Holland, have organized a number of special events this year to mark the anniversary.

The club is holding an Anniversary Ball on July 26th, the actual anniversary date, which it is hoped will be a very memorable evening for past and present members.

For our Open Golf week this year, August 17th to August 22nd a special invitation has gone to other clubs in the country also celebrating 125 years, besides being open to all



golfers with current handicaps.

Captain's Tour this year is a trip to the Gower Peninsular playing 3 courses including Ashburnham which is also celebrating 125 years.

A full programme of team matches, social golf and social events is planned throughout the year.

Both Captains have chosen to support a local Charity this year. Dukes Barn Trust is based at Beeley and is one of only 2 centres designed to offer handicapped children the 'full outward bound' experience. We are specifically collecting in aid of upgrading their flotilla of canoes to be used on the Chatsworth lakes and in the Derwent.

As always both new members and visitors will receive a very warm welcome at Chevin.

## **Rules Evening**

A very enjoyable and instructive evening was held for members on Thursday 14th march.

The R&A and USPGA have spent a number of years looking and discussing changes to the rules of golf.

Chevin invited Mr Kevin Feeney, a "highly respected referee" on the European and US Tour, who came to Chevin to explain the new rules of golf to the members.

We had an informative and fun evening; he did a great presentation, and the video examples from the current European tour showed that the top professionals also need some help here. Our members quiz scores were pretty

creditable – but as always there is room for improvement!

He also recounted many of his experiences on the Tour. He has refereed all over the world, most recently in the Middle East at the European Tour events that begin season. Kevin has also refereed in many Ryder Cup competitions

## **Night Time Golf**

Chevin held its first night golf competition in March. This was organized by our professional, Tim Stevens.

The bottom 6 holes were lit up for a shotgun start. The fairways were lit and the lit balls were tracing through the night sky – it felt a bit like bonfire night. The event was won by Jason Curzon and Kev Shipley with an impressive under par score. Although it was quite difficult to play in the dark all the members who took part thoroughly enjoyed the evening and said it was great fun. Hopefully we will be able to organize another similar event. Members enjoyed supper in the clubhouse afterwards. [www.chevingolf.co.uk](http://www.chevingolf.co.uk)



Neil Armstrong – Junior Organiser, Dave Dawson – Captain, Kevin Feeney – Referee, Tim Stevens – Professional, Chris Holland – Ladies Captain



Night Time Golf at Chevin



## DUFFIELD CARNIVAL 29TH JUNE



“Oh I do like to be beside the sea...” - That’s the theme for Duffield Carnival 2019. The Carnival Crew welcome the community of Duffield and environs to visit that famous seaside resort of Eyes Meadow on Sat 29th June. As usual the day will start with a jubilant procession through the village. Have you or your group ever thought about making a splash in the Procession? Don’t be lost in the crowd of a big float,

bring your own vehicle, pram, supermarket trolley or be on foot so long as you are in fancy dress and smiling you are welcome to join in. There will be lots to do on the day, who knows even a beach? The Carnival Crew are busy pulling it together to culminate a full Carnival week starting with a Treasure Hunt on Sunday 23rd June. Want to be part of it or help out? contact [duffieldcarnival@gmail.com](mailto:duffieldcarnival@gmail.com). [www.duffieldcarnival.co.uk](http://www.duffieldcarnival.co.uk).

## Springwood House Residential Care Home

Duffield Bank, Duffield, Derbyshire DE56 4BG



Springwood House is a friendly, family run Residential Home celebrating it's 40th year. We will change the way you view care by providing a personalised, inclusive service within a country house hotel atmosphere.

### HERE ARE A FEW OF THE SERVICES WE PROVIDE:

- Long Term 24 Hour Care
- Short Term Care, Respite and Convalescence
- Day Care with a Bath & Home-Cooked Meals
- Busy social calendar, activities and trips out
- Visiting Hairdresser & Chiropodist

We are proud  
of our CQC report,  
achieving 'GOOD'  
in every category

Tel: 01332 840757 / 07775 847843  
email: [springwoodhouse@gmail.com](mailto:springwoodhouse@gmail.com)

“  
My life  
My home  
My favourite  
chair by the fire

Home care from  
Bluebird Care



Find out more about home care and the difference it could make to your life.

Email the Bluebird Care team to find out more about our home care service:  
[ambervalley@bluebirdcare.co.uk](mailto:ambervalley@bluebirdcare.co.uk)  
or call us on 01773 880055

[bluebirdcare.co.uk/amber-valley](http://bluebirdcare.co.uk/amber-valley)